

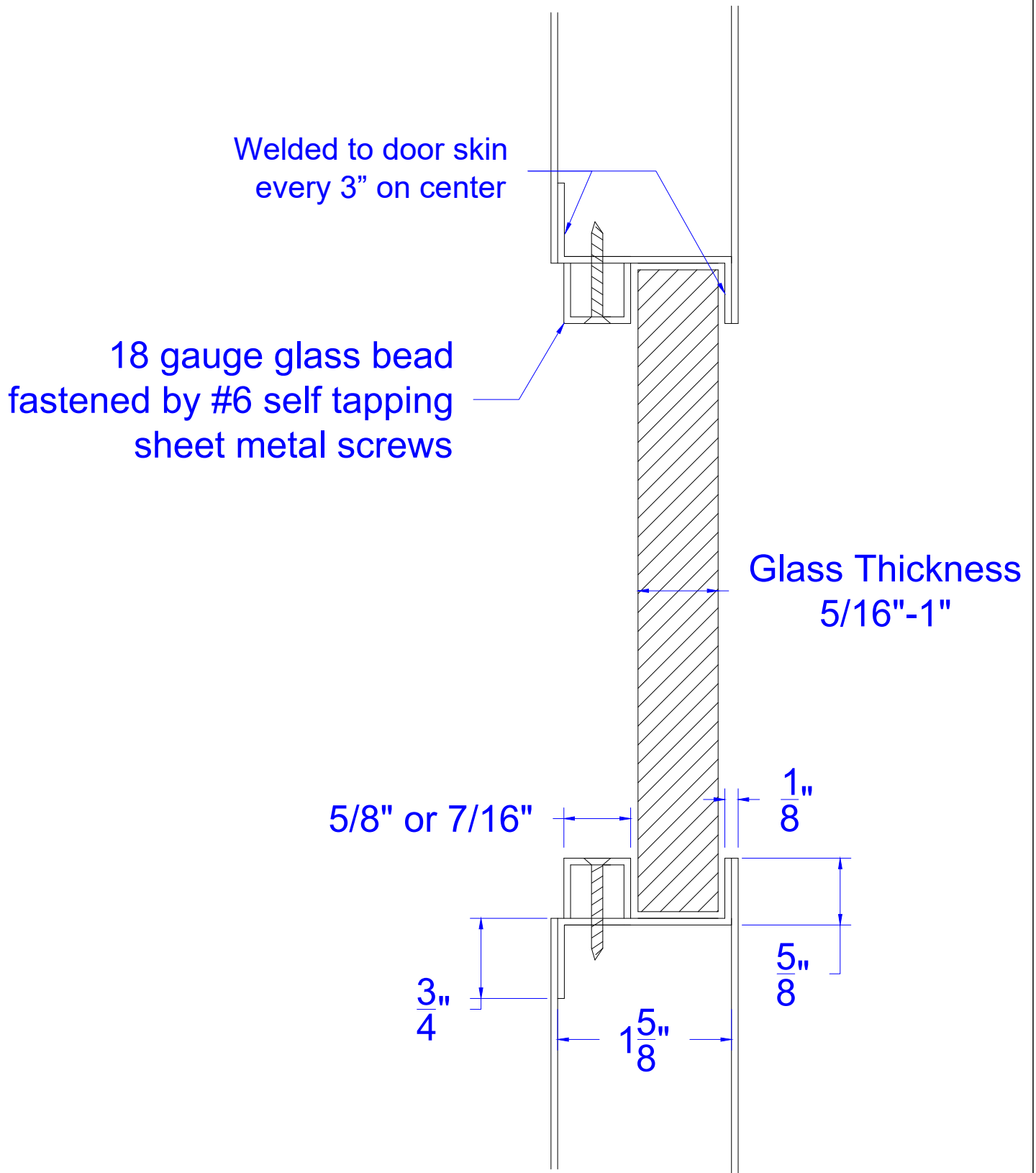
# Concept Frames

2015 Industrial Drive, Newton, NC 28658  
PH: 888-234-9455 Fax: 800-631-9089  
[www.ConceptFrames.Com](http://www.ConceptFrames.Com)

Drawn By: KX

Date: 2-13-2015

Door Lite Kit  
1/4" Glass thickness



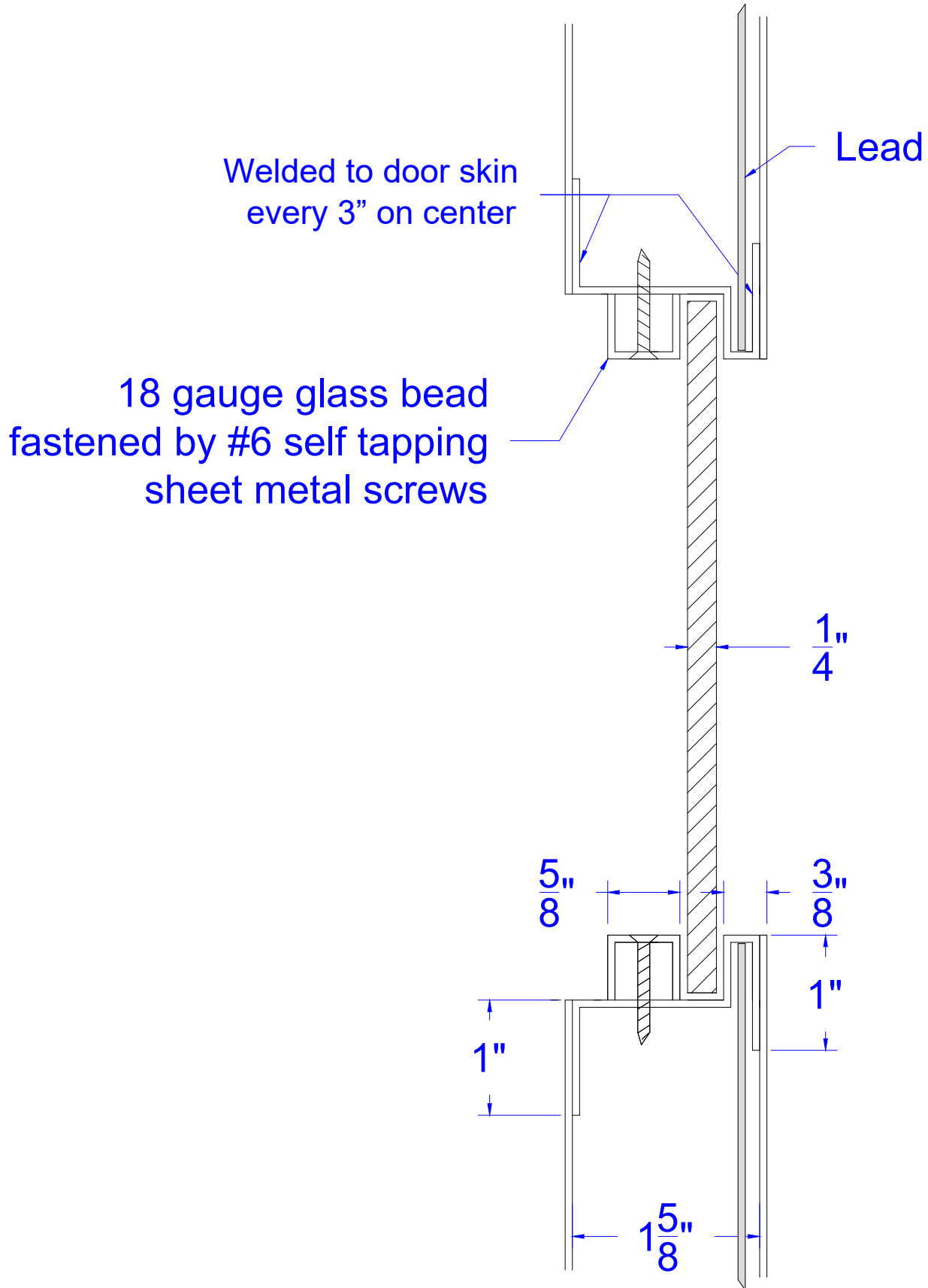
# Concept Frames

2015 Industrial Drive, Newton, NC 28658  
PH: 888-234-9455 Fax: 800-631-9089  
[www.ConceptFrames.Com](http://www.ConceptFrames.Com)

Drawn By: KX

Date: 2-13-2015

Door Lite Kit  
Glass thickness greater than  
1/4" and up to 1"



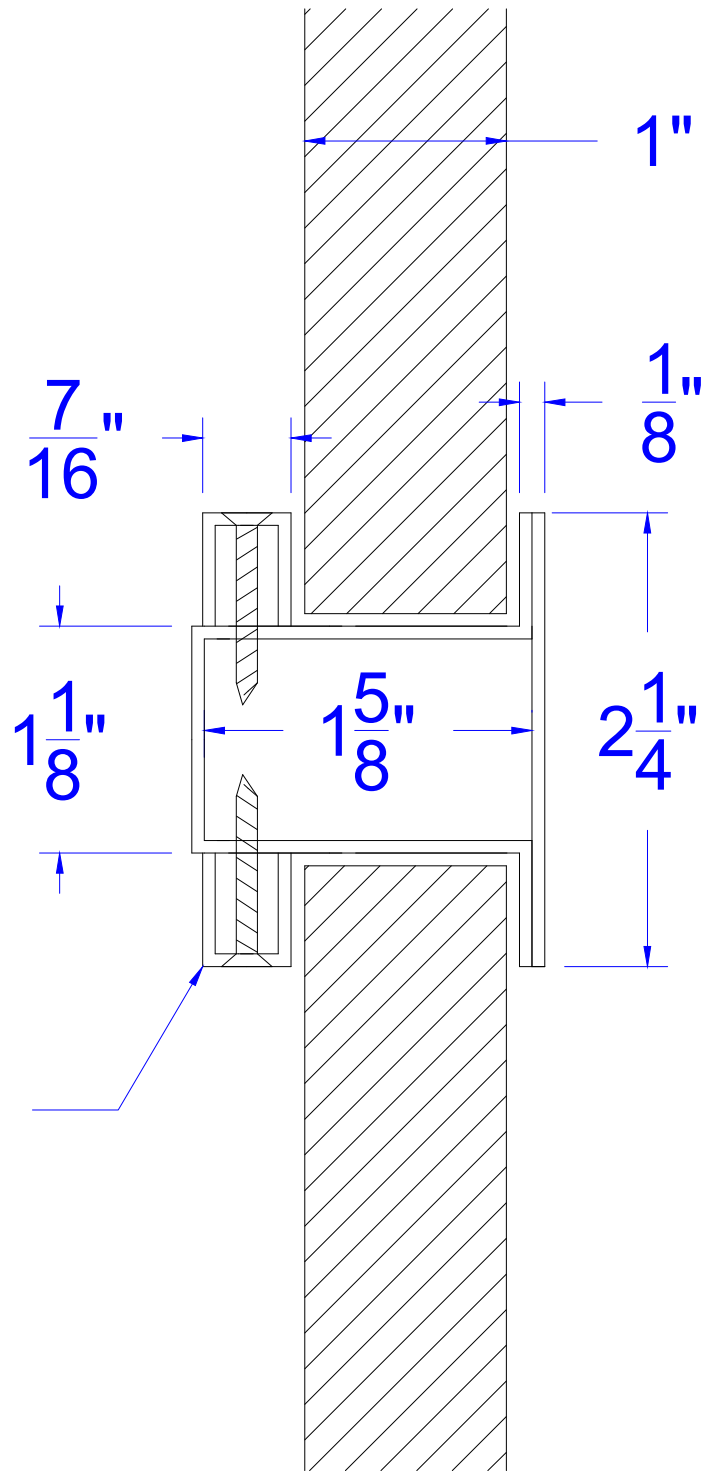
# Concept Frames

2015 Industrial Drive, Newton, NC 28658  
PH: 888-234-9455 Fax: 800-631-9089  
[www.ConceptFrames.Com](http://www.ConceptFrames.Com)

Drawn By: KX

Date: 2-13-2015

Lead Lined Door Lite Kit



18 gauge glass bead  
fastened by #6 self tapping  
sheet metal screws

## Concept Frames

2015 Industrial Drive, Newton, NC 28658  
PH: 888-234-9455 Fax: 800-631-9089  
[www.ConceptFrames.Com](http://www.ConceptFrames.Com)

Drawn By: KX

Date: 2-13-2015

Hollow metal door mullion with glass stops