

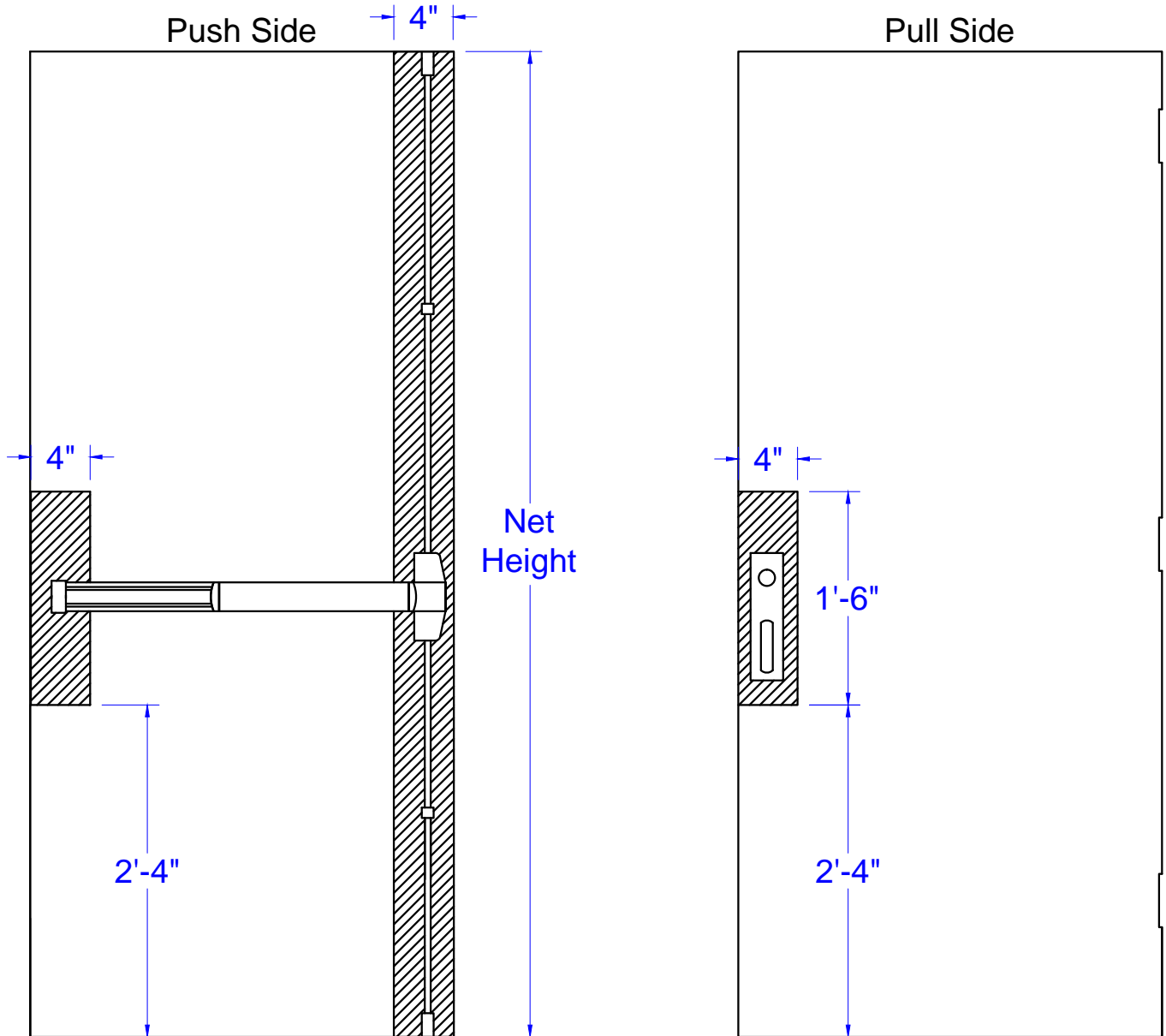
- All reinforcements shall be constructed of 16 gage material per HMMA 860-92
- Reinforcements provided 5" wide or width of stile.
- Trim reinforcements not provided on outside face when "exit only" is specified.

**Concept Frames, Inc.**  
 2015 Industrial Drive, Newton, NC 28658  
 PH: 888-234-9455 Fax: 800-631-9089  
[www.ConceptFrames.Com](http://www.ConceptFrames.Com)

Drawn By: KX

Date: 2-18-2015

Reinforcements for Rim, Mortise,  
 and Concealed Vertical Rod Devices



- All reinforcements shall be constructed of 16 gage material per HMMA 860-92
- Reinforcements provided 5" wide or width of stile.
- Trim reinforcements not provided on outside face when "exit only" is specified.
- Surface vertical rod rein. provided full height of door

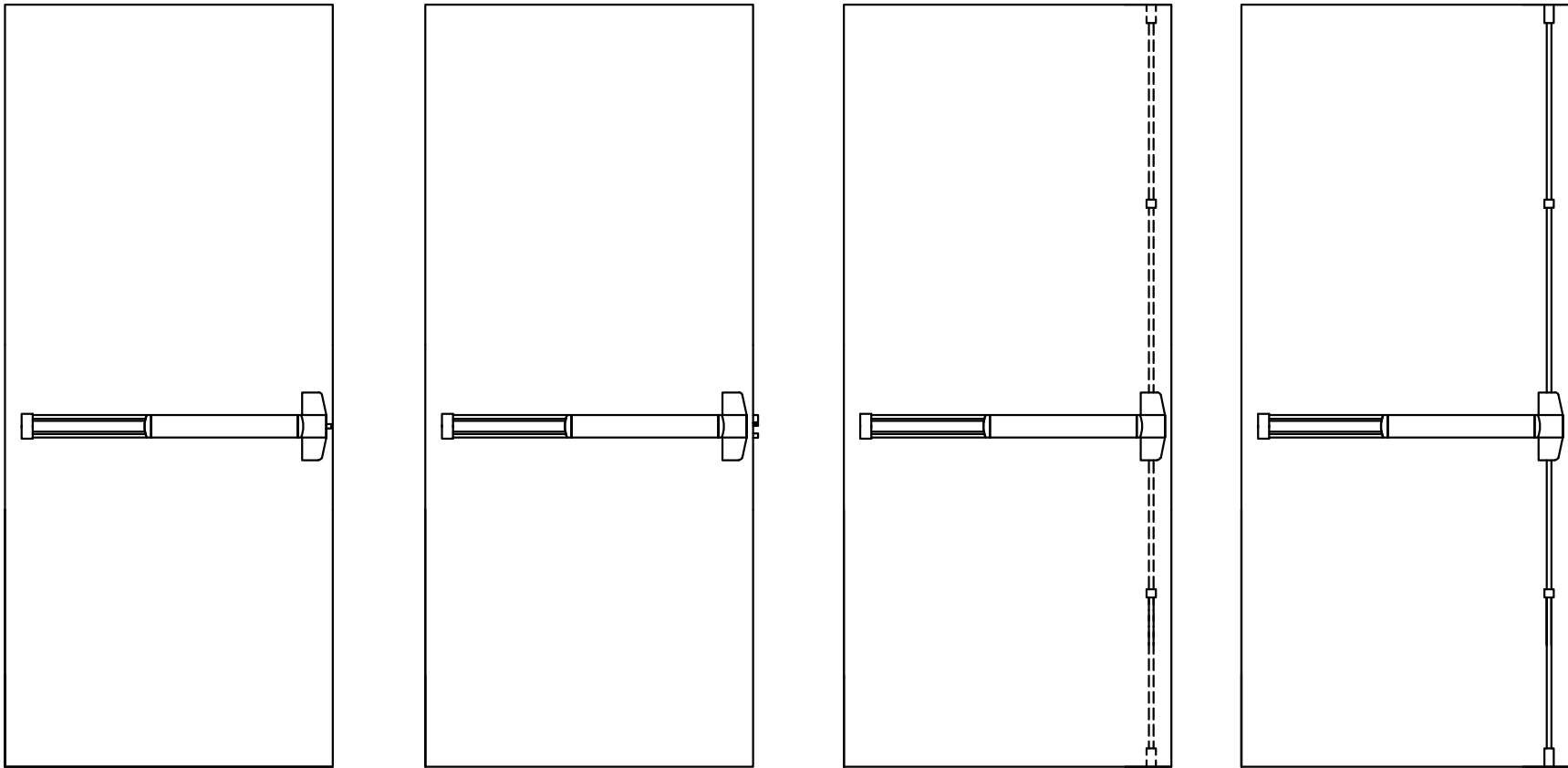
**Concept Frames, Inc.**  
2015 Industrial Drive, Newton, NC 28658  
PH: 888-234-9455 Fax: 800-631-9089  
[www.ConceptFrames.Com](http://www.ConceptFrames.Com)

Drawn By: KX

Date: 2-18-2015

Reinforcements for  
Surface Vertical Rod Devices

Not to scale



All doors with Rim, Mortise, Concealed or Surface Vertical Rods require the auxiliary label shown below.



**Concept Frames, Inc.**

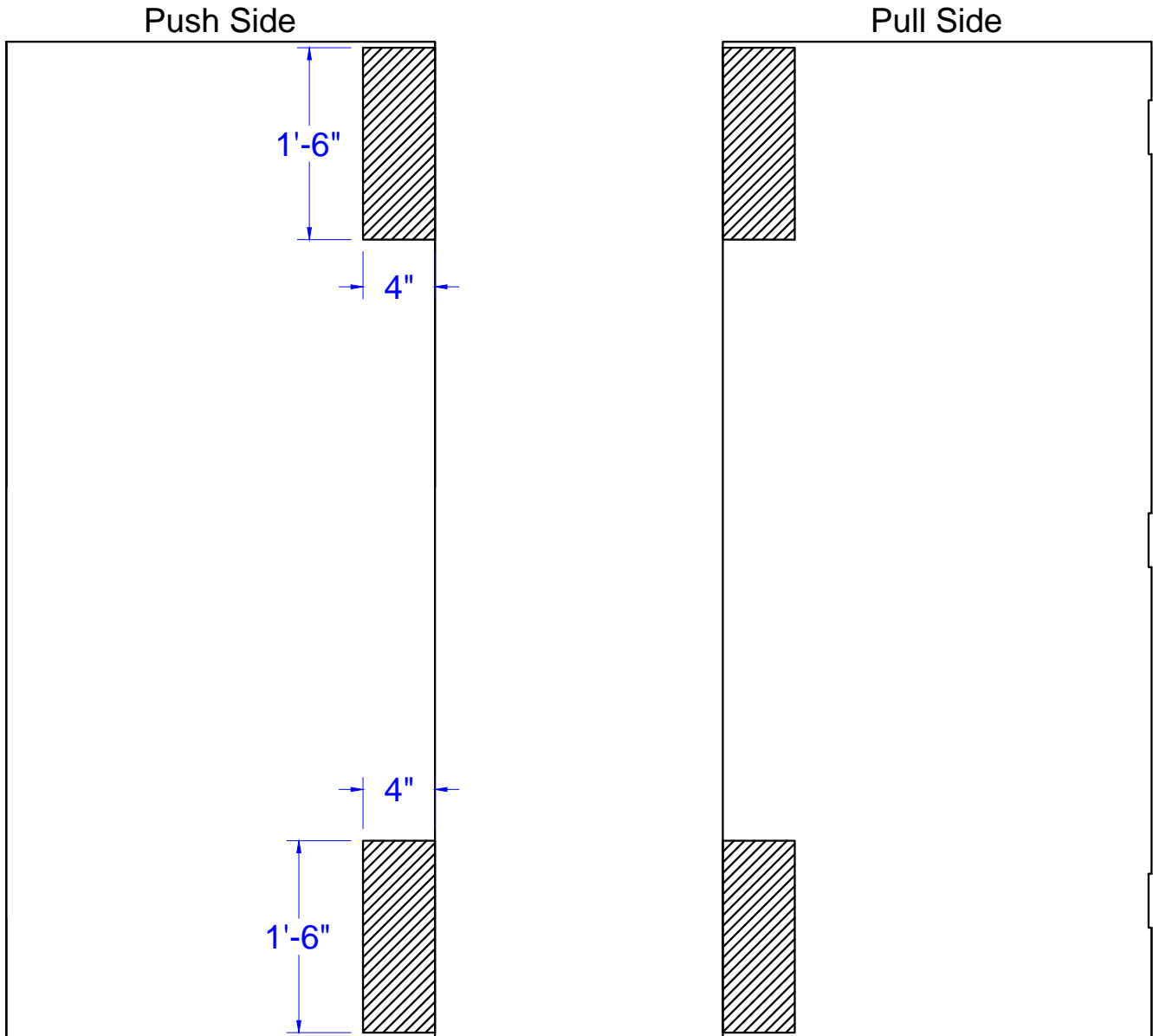
2015 Industrial Drive, Newton, NC 28658  
PH: 888-234-9455 Fax: 800-631-9089

[www.ConceptFrames.Com](http://www.ConceptFrames.Com)

Drawn By: KX

Date: 2-19-2015

Fire Rated Door with Exit Hardware Auxiliary Label



- Closer reinforcement box will be welded to the top and bottom of door.
- Reinforcement will be butted against strike channel or door edge.
- Clearance will be allowed for top and bottom channels

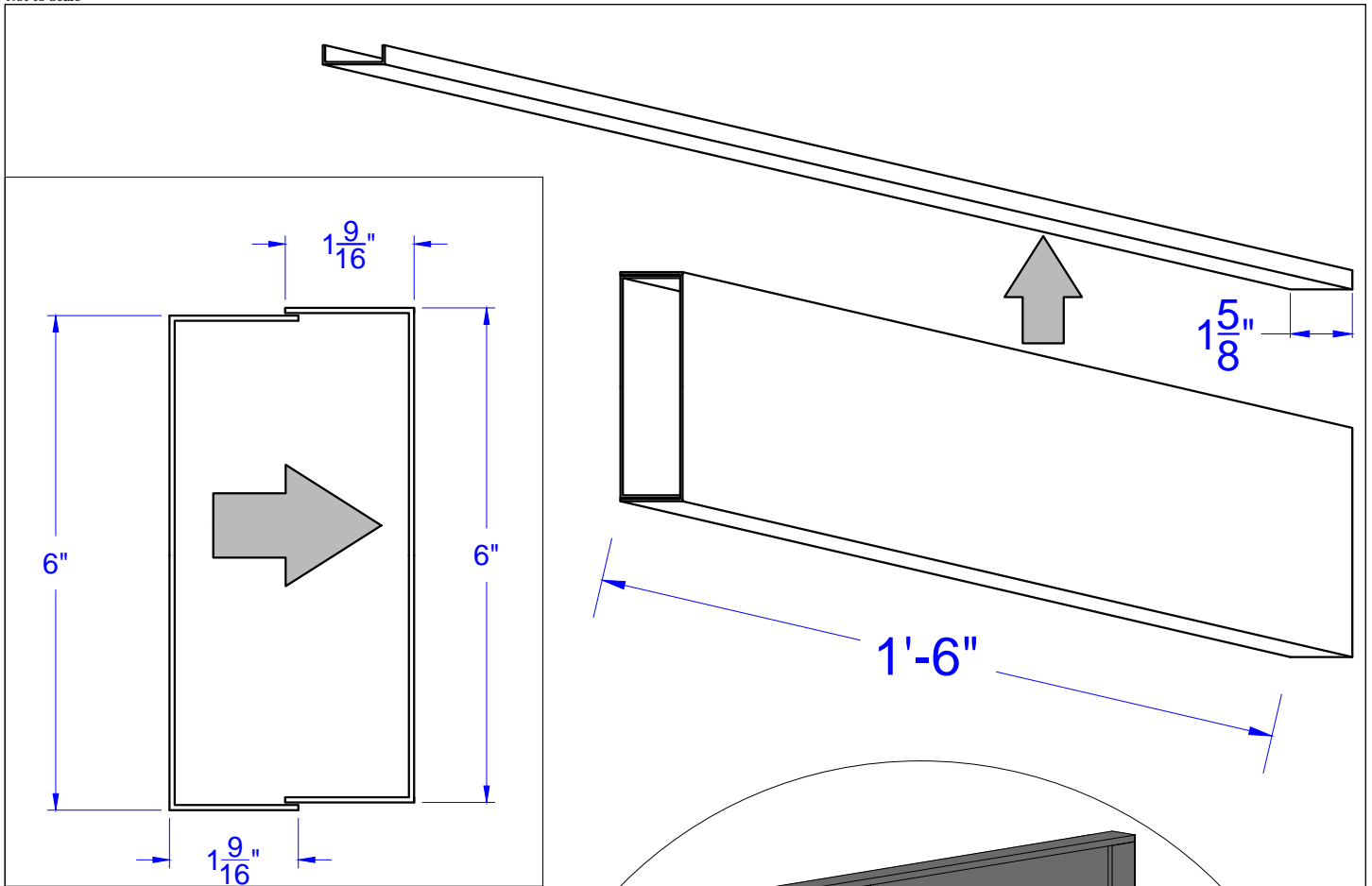
\* See Closer Reinforcement Technical Data Sheet for reinforcement details

**Concept Frames, Inc.**  
2015 Industrial Drive, Newton, NC 28658  
PH: 888-234-9455 Fax: 800-631-9089  
[www.ConceptFrames.Com](http://www.ConceptFrames.Com)

Drawn By: KX

Date: 2-19-2015

Reinforcements for Surface Bolt

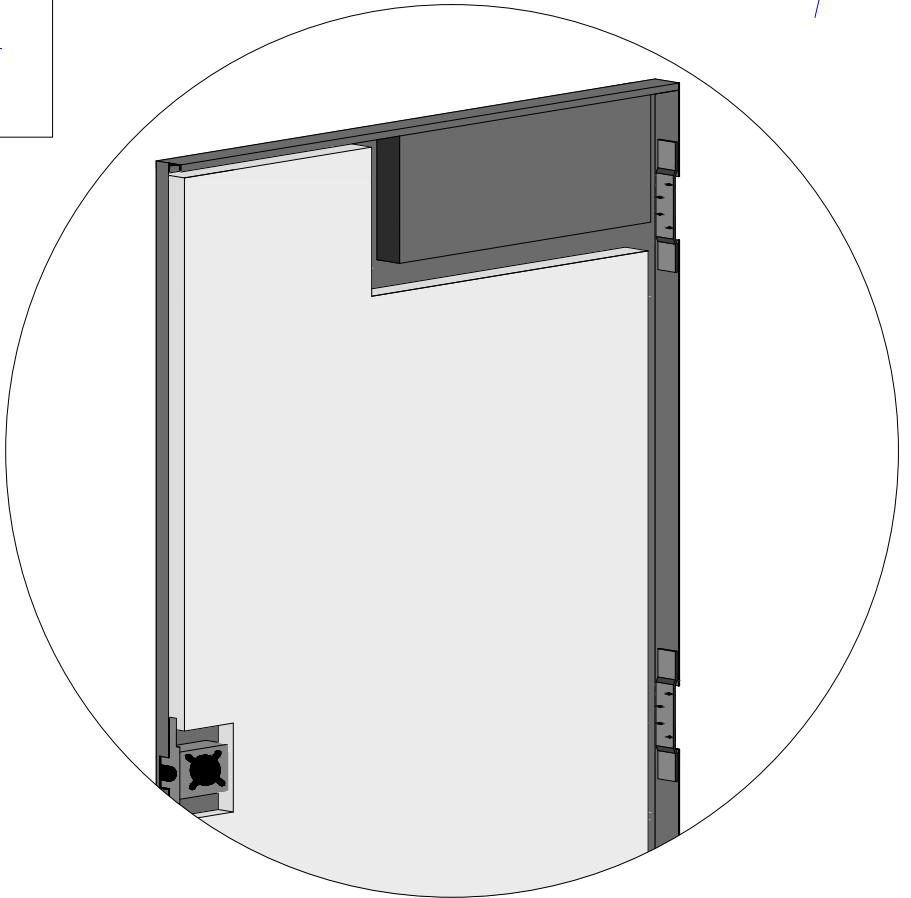


Closer reinforcement is fabricated out of 16 gauge.

The closer box is welded to top cap at each end.

Top cap closer assembly is welded to each door skin.

In lieu of closer box, flat plates may be used. Each flat plate shall be of 16 gage and welded to each door skin.



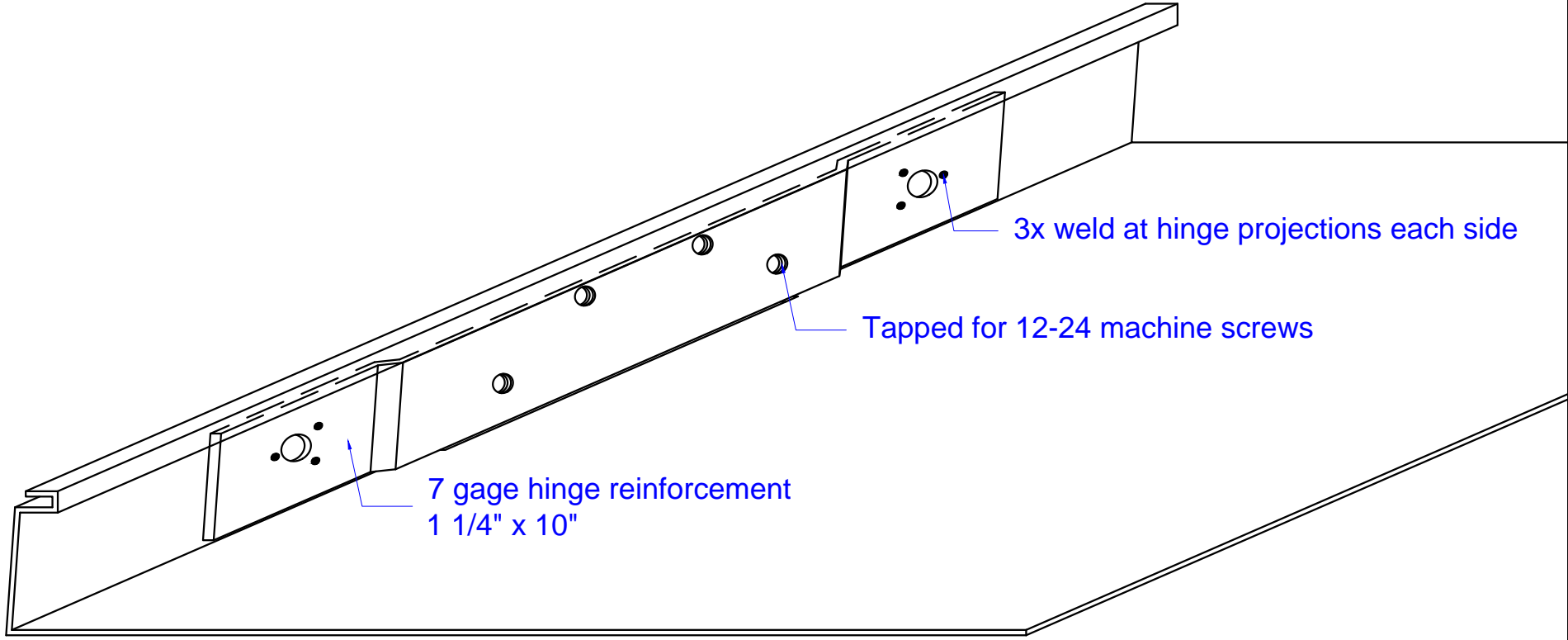
**Concept Frames, Inc.**  
 2015 Industrial Drive, Newton, NC 28658  
 PH: 888-234-9455 Fax: 800-631-9089  
[www.ConceptFrames.Com](http://www.ConceptFrames.Com)

Drawn By: KX

Date: 2-19-2015

Hollow Metal Door  
 Closer Reinforcement

Not to scale



1/4" standard hinge backset for 1 3/4" thick door.

## Concept Frames, Inc.

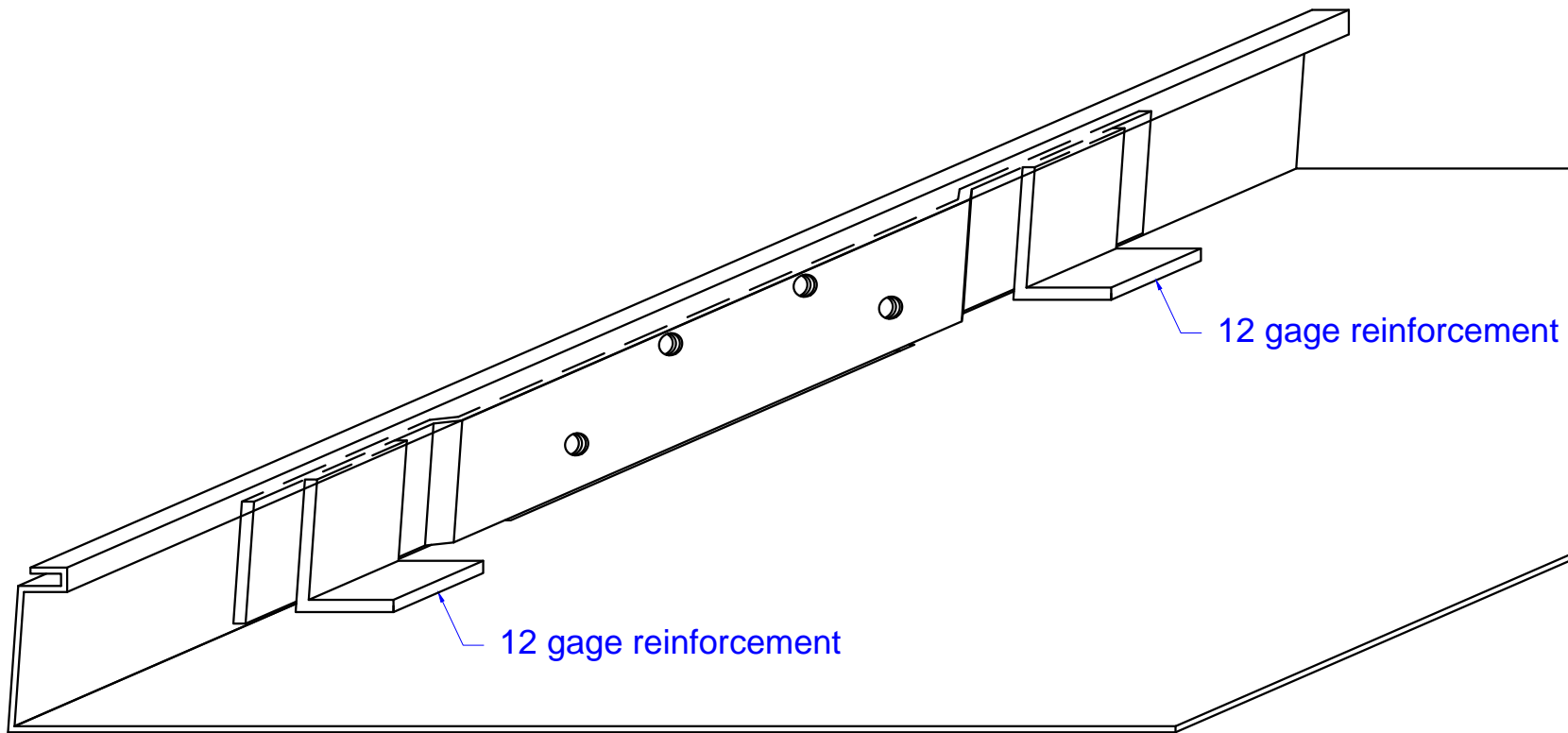
2015 Industrial Drive, Newton, NC 28658  
PH: 888-234-9455 Fax: 800-631-9089

[www.ConceptFrames.Com](http://www.ConceptFrames.Com)

Drawn By: KX

Date: 2-19-2015

Hollow Metal Door Hinge Reinforcement Detail



High frequency hinge reinforcements are typically welded at the top hinge location, but can be used at other hinge locations

## Concept Frames, Inc.

2015 Industrial Drive, Newton, NC 28658  
PH: 888-234-9455 Fax: 800-631-9089

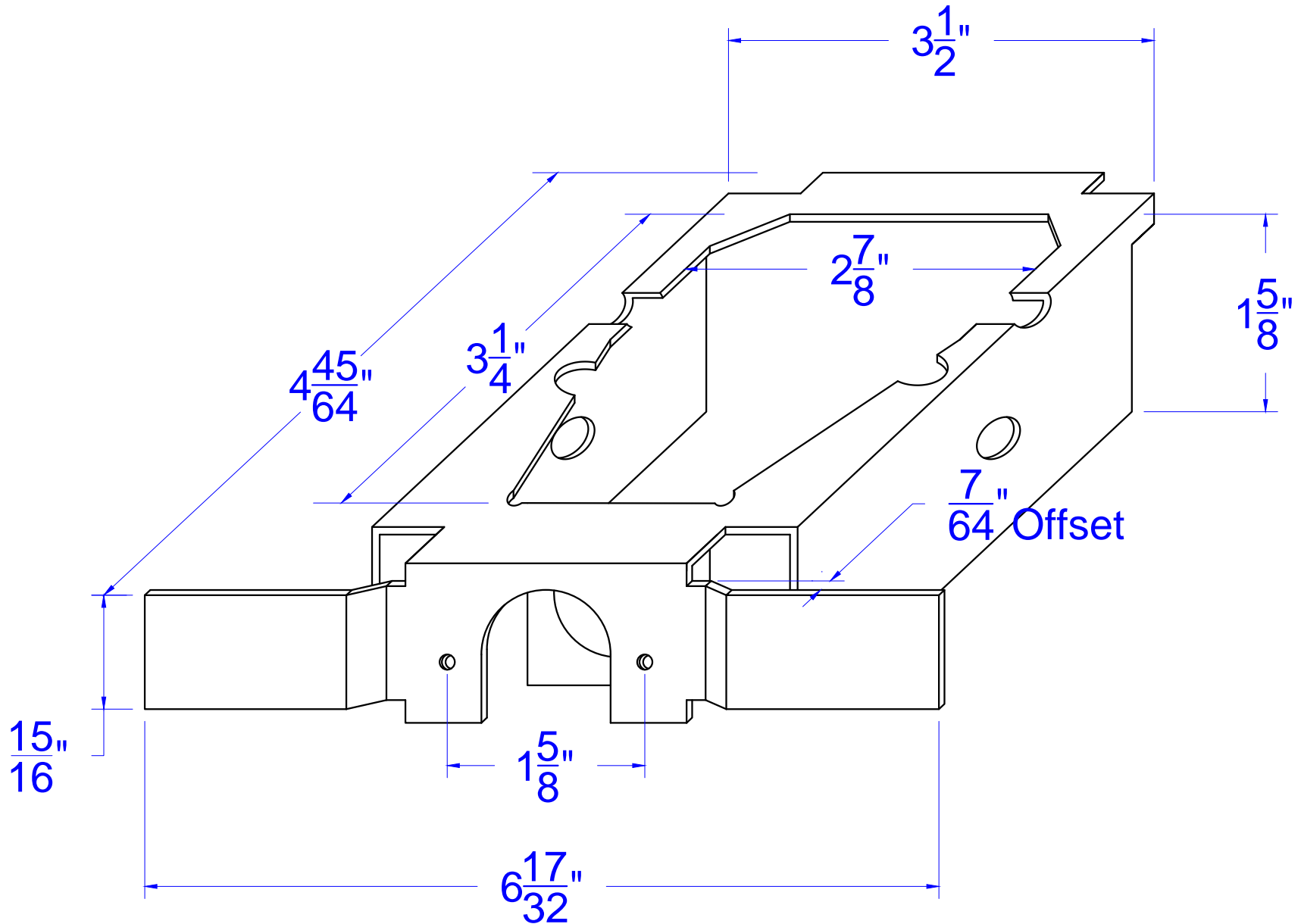
[www.ConceptFrames.Com](http://www.ConceptFrames.Com)

Drawn By: KX

Date: 2-19-2015

Hollow Metal Door

High Frequency Hinge Reinforcements Detail



# Concept Frames, Inc.

2015 Industrial Drive, Newton, NC 28658  
PH: 888-234-9455 Fax: 800-631-9089

[www.ConceptFrames.Com](http://www.ConceptFrames.Com)

Drawn By: KX

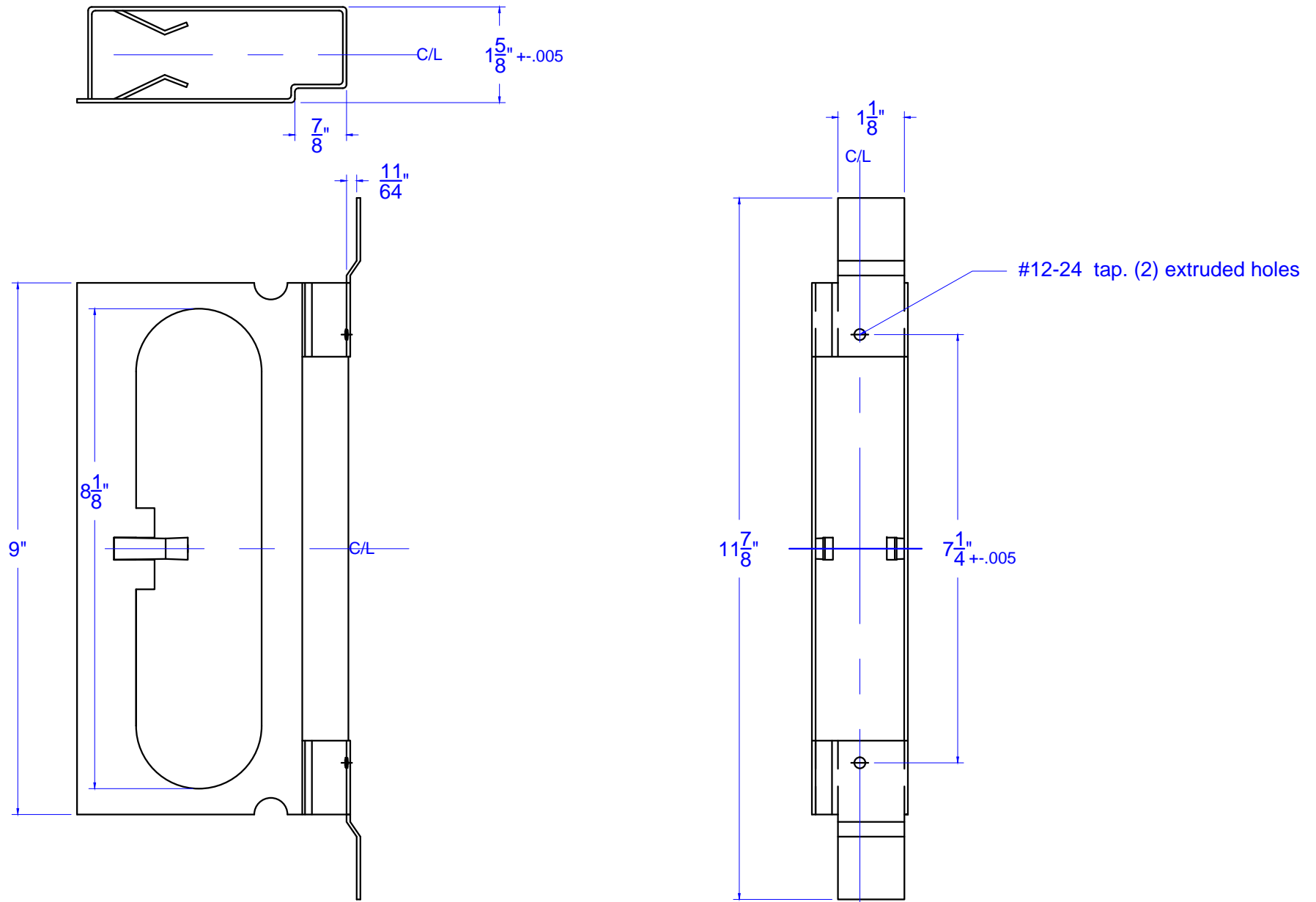
Date: 2-19-2015

Hollow Metal Door

16 gage Cylindrical Lock Reinforcement



Not to scale



# Concept Frames, Inc.

2015 Industrial Drive, Newton, NC 28658  
PH: 888-234-9455 Fax: 800-631-9089

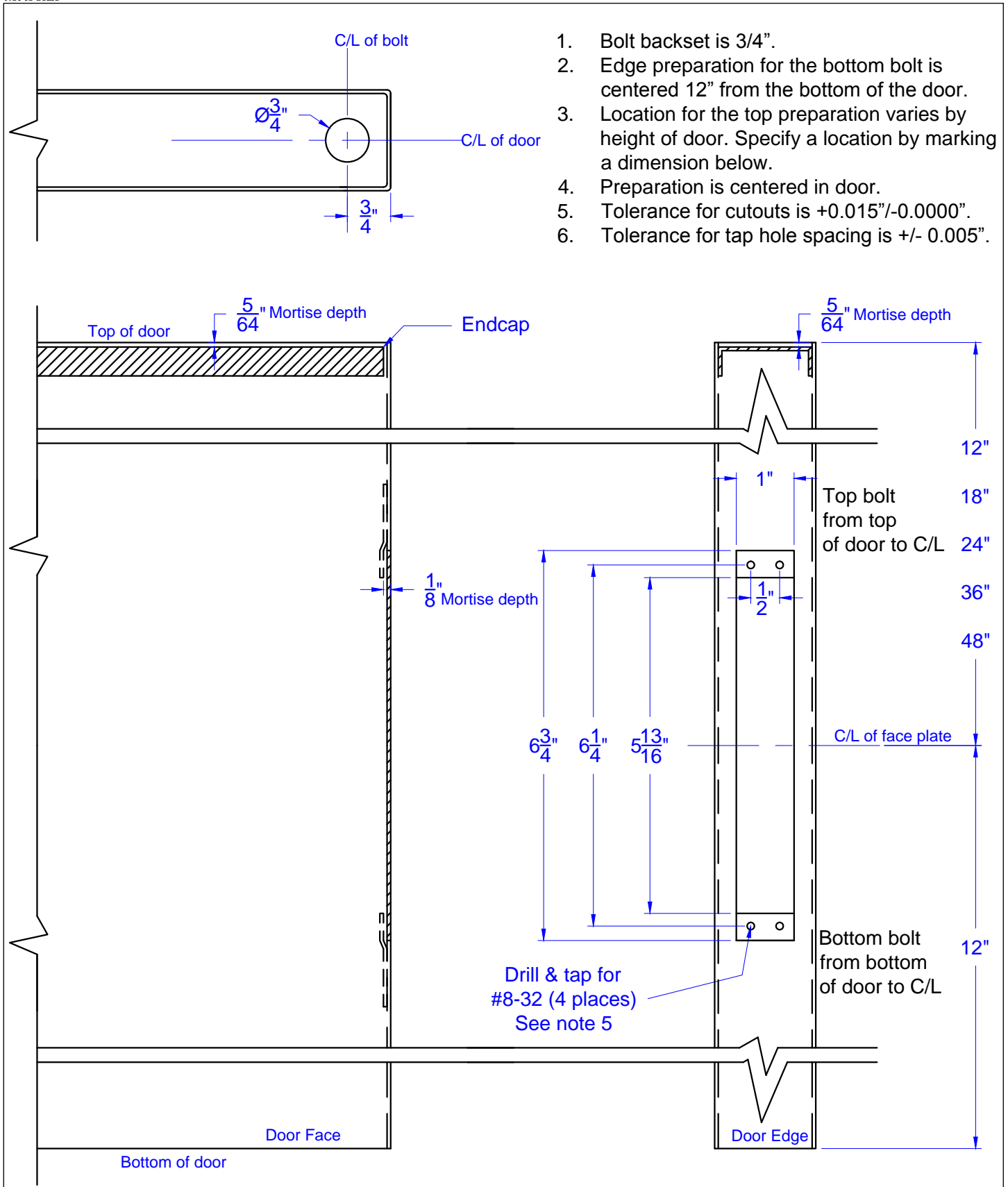
[www.ConceptFrames.Com](http://www.ConceptFrames.Com)

Drawn By: KX

Date: 2-19-2015

Hollow Metal Door

14 gage Mortise Lock Reinforcement



1. Bolt backset is 3/4".
2. Edge preparation for the bottom bolt is centered 12" from the bottom of the door.
3. Location for the top preparation varies by height of door. Specify a location by marking a dimension below.
4. Preparation is centered in door.
5. Tolerance for cutouts is +0.015"/-0.0000".
6. Tolerance for tap hole spacing is +/- 0.005".

**Concept Frames, Inc.**  
 2015 Industrial Drive, Newton, NC 28658  
 PH: 888-234-9455 Fax: 800-631-9089  
[www.ConceptFrames.Com](http://www.ConceptFrames.Com)

Drawn By: KX

Date: 2-19-2015

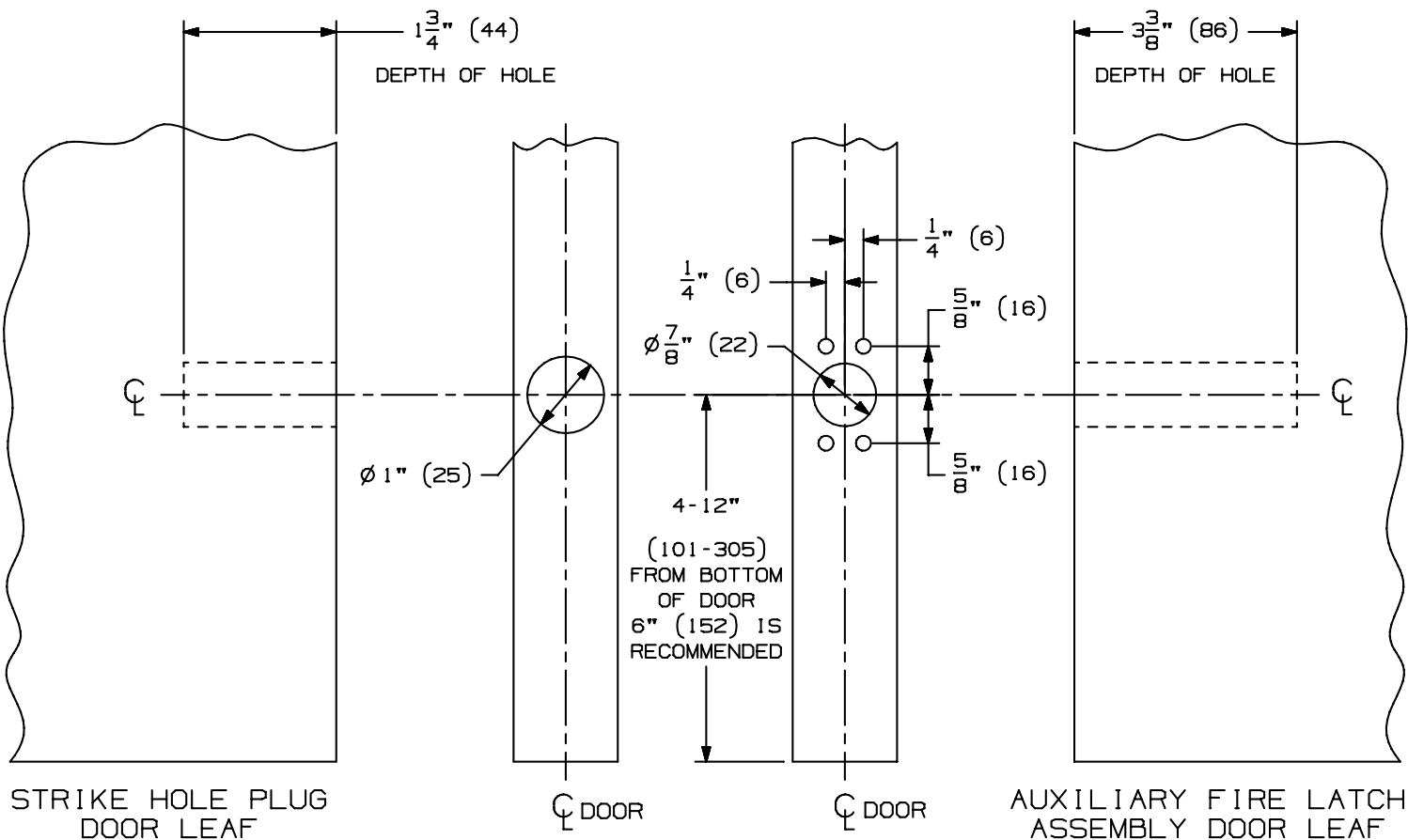
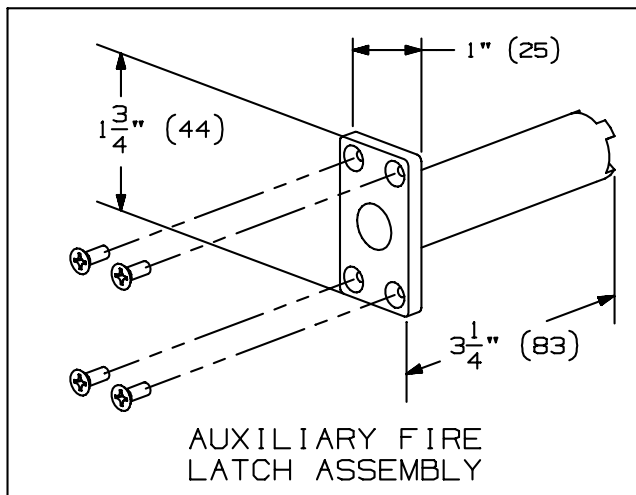
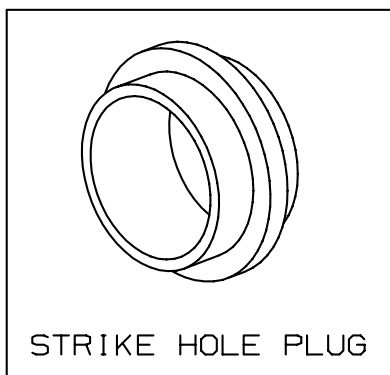
A.N.S.I. A115.4 Standard  
 Manual Flush Bolt Preparation  
 for 1 3/4" Steel Doors

LBB FIRE LATCH FOR USE ONLY WITH IVES  
 FB32, FB33, FB42, FB52, FB53 AND FB62 FLUSH BOLTS

NOTE:

IT DOES NOT MATTER WHICH DOOR LEAF THE AUXILIARY FIRE LATCH IS INSTALLED. HOWEVER, THE LATCH MUST BE INSTALLED TO MAINTAIN FIRE LISTING. THE PURPOSE OF THE AUXILIARY FIRE LATCH ASSEMBLY IS TO KEEP THE DOORS IN ALIGNMENT DURING A FIRE. IN A FIRE, THE BOLT EXTENDS FROM THE AUXILIARY FIRE LATCH INTO THE STRIKE HOLE IN THE OPPOSITE DOOR LEAF. THE BLACK CAP VISIBLE ON THE FACE OF THE LATCH MUST MELT IN ORDER FOR THE BOLT TO EXTEND, THEREFORE:

DO NOT COVER THE DOOR GAP AT THE AUXILIARY FIRE LATCH WITH A DOOR EDGE GUARD OR SIMILAR DEVICE.



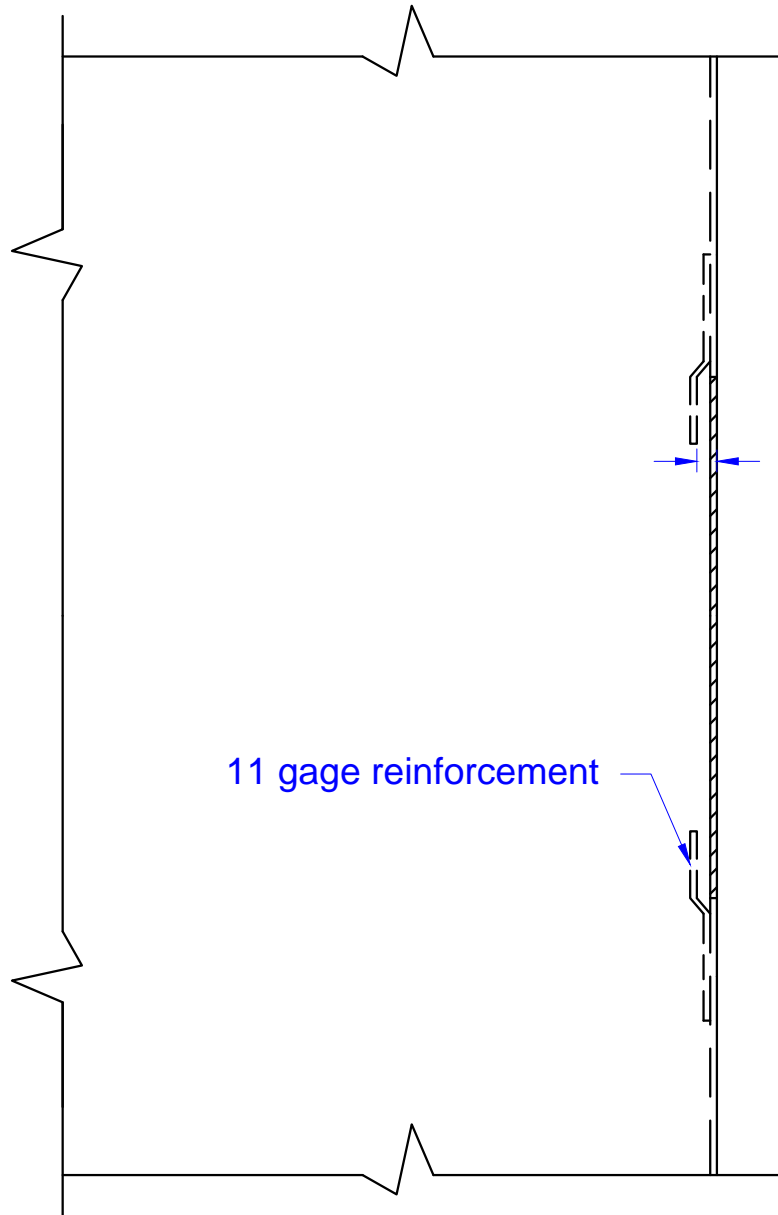
**IVES** FB53 CONSTANT LATCHING FLUSH BOLT  
 WITH AUXILIARY FIRE LATCH  
 FOR METAL DOORS  
 INSTALLATION TEMPLATE



NOTE: DIMENSIONS IN ( ) ARE MILLIMETERS.

TEMPLATE NUMBER: INST.FB53\_0.PG3

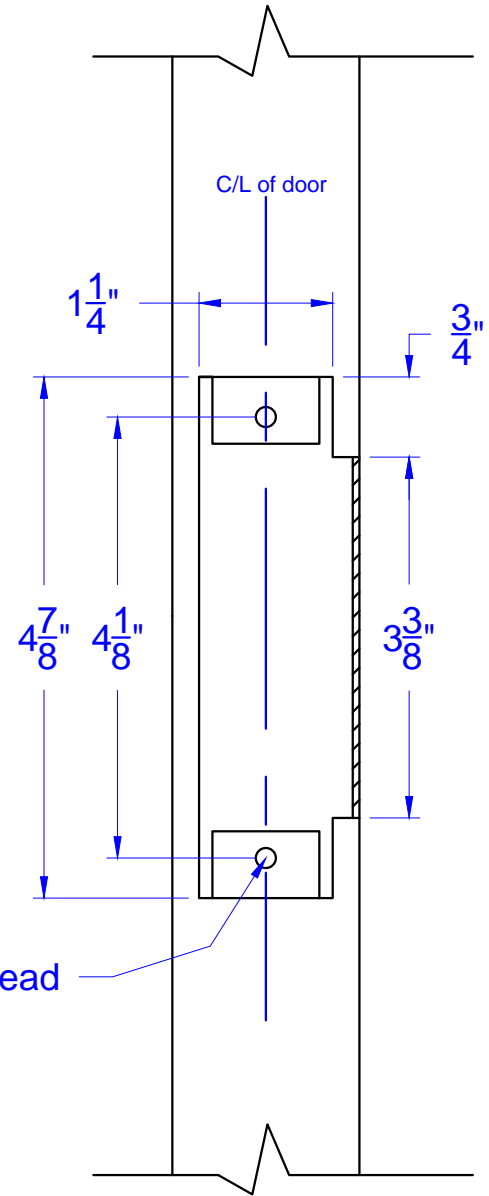
DATE: 09-01-01



11 gage reinforcement

$\frac{3}{16}$ " Mortise depth

#12-24 thread



C/L of door

$1\frac{1}{4}$ "

$\frac{3}{4}$ "

$4\frac{7}{8}$ "

$4\frac{1}{8}$ "

$3\frac{3}{8}$ "

# Concept Frames, Inc.

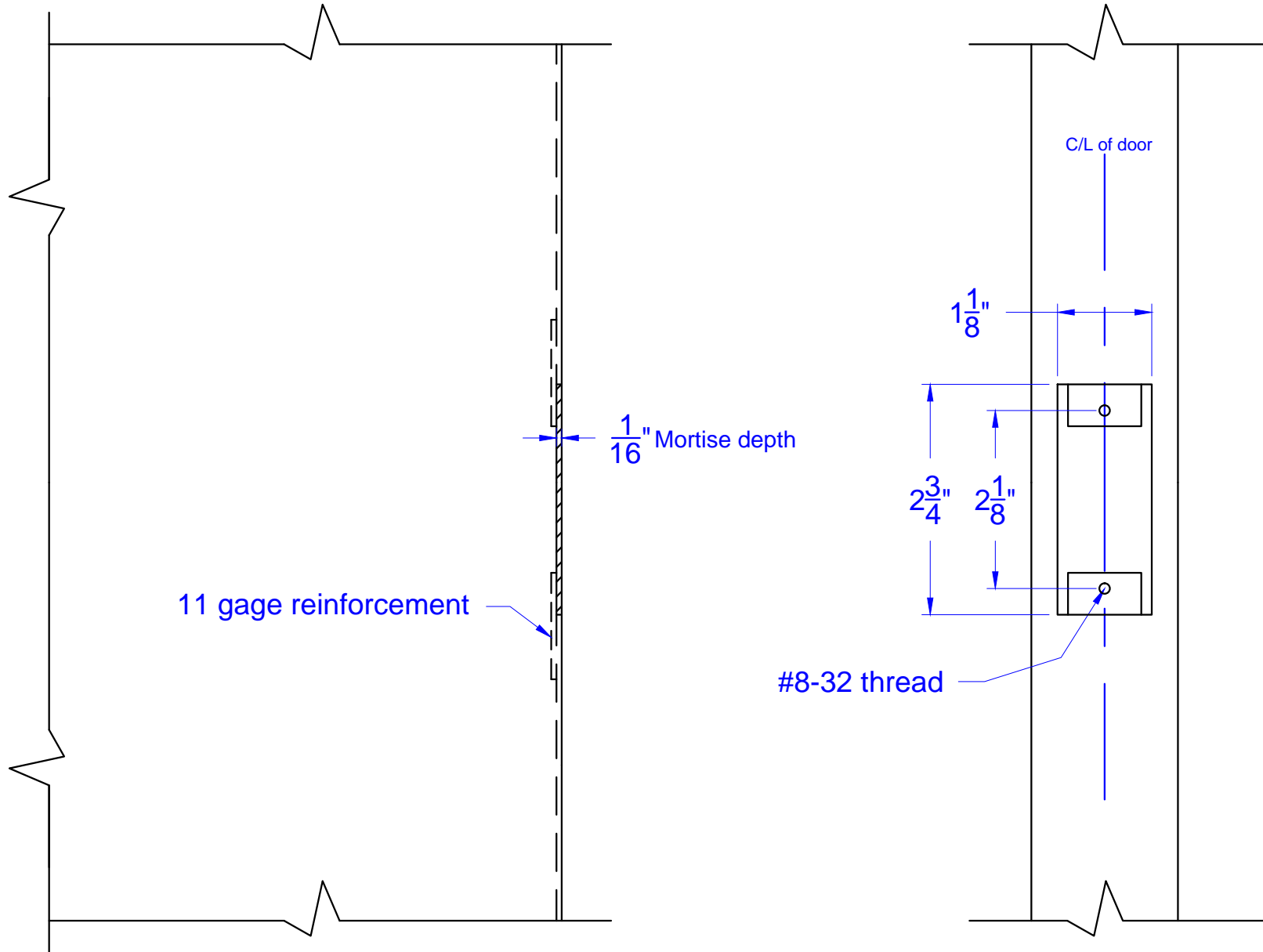
2015 Industrial Drive, Newton, NC 28658  
PH: 888-234-9455 Fax: 800-631-9089

[www.ConceptFrames.Com](http://www.ConceptFrames.Com)

Drawn By: KX

Date: 2-20-2015

Hollow Metal Door  
ASA Strike Preparation



# Concept Frames, Inc.

2015 Industrial Drive, Newton, NC 28658  
PH: 888-234-9455 Fax: 800-631-9089

[www.ConceptFrames.Com](http://www.ConceptFrames.Com)

Drawn By: KX

Date: 2-20-2015

Hollow Metal Door  
Deadlock Strike Preparation