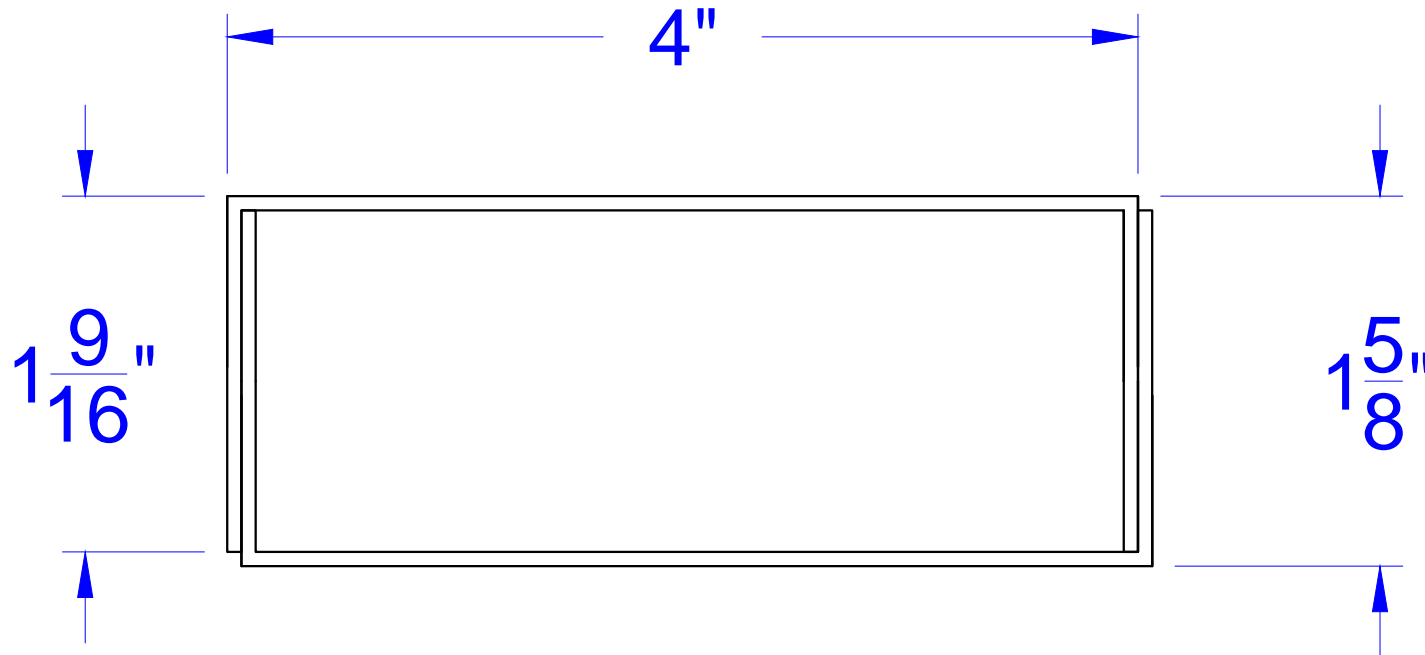


16 gage material
Splice stiffener for a 1 3/4" thick door shown



16 gage steel stiffeners will be used on oversized doors that requires a vertical or horizontal splice. Stiffeners will be centered in splice sections or used as reinforcement for wide doors.

Concept Frames, Inc.

2015 Industrial Drive, Newton, NC 28658
PH: 888-234-9455 Fax: 800-631-9089

www.ConceptFrames.Com

Drawn By: KX

Date: 2-20-2015

Hollow Metal Door
Steel Stiffeners for Spliced Door