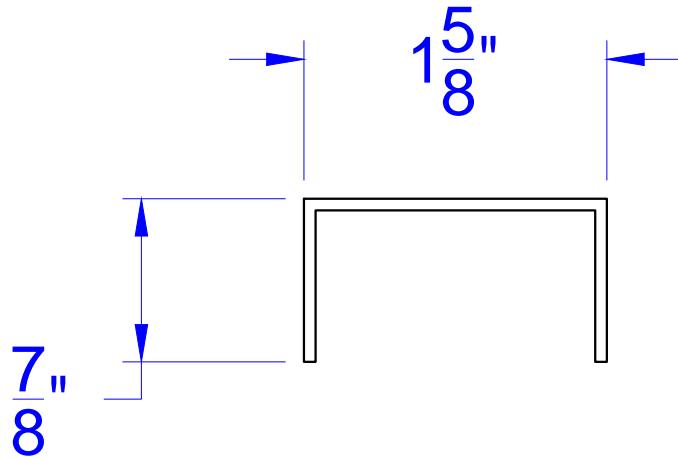
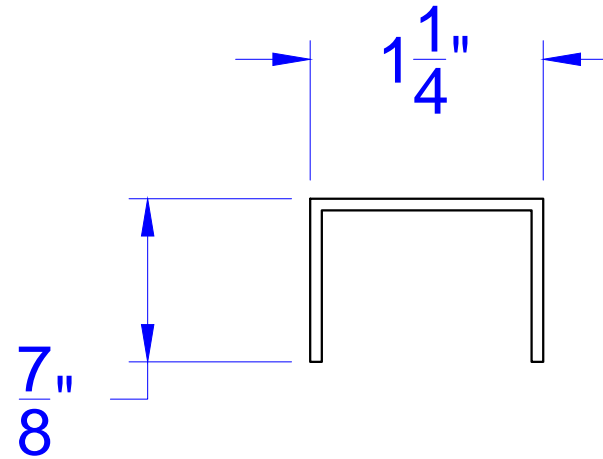


16 gage  
1 3/4" thick door



16 gage  
1 3/8" thick door



**Concept Frames, Inc.**

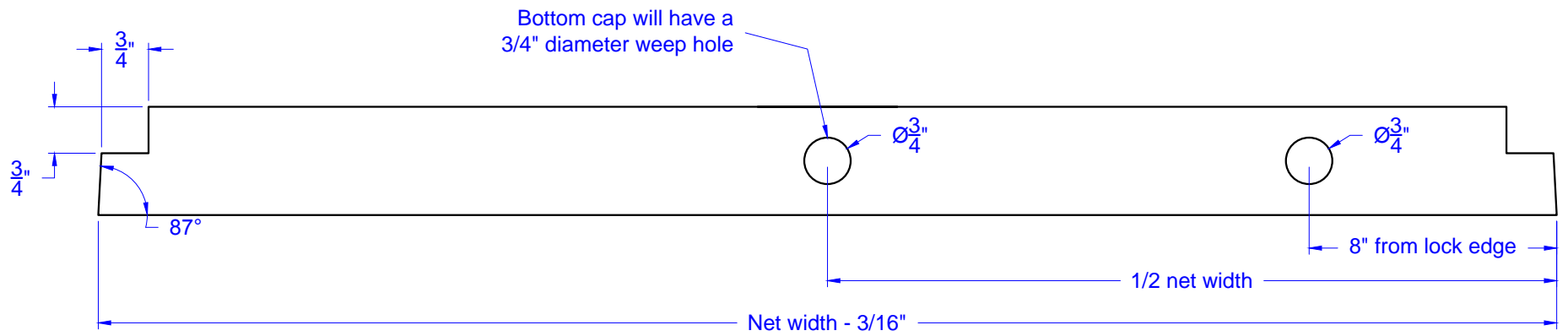
2015 Industrial Drive, Newton, NC 28658  
PH: 888-234-9455 Fax: 800-631-9089

[www.ConceptFrames.Com](http://www.ConceptFrames.Com)

Drawn By: KX

Date: 2-20-2015

Hollow Metal Door Endcaps



# Concept Frames, Inc.

2015 Industrial Drive, Newton, NC 28658  
PH: 888-234-9455 Fax: 800-631-9089

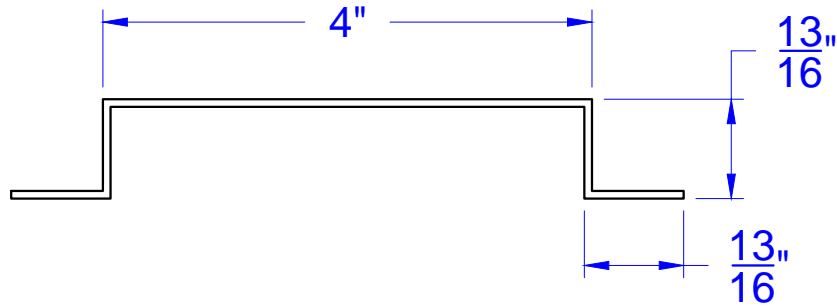
[www.ConceptFrames.Com](http://www.ConceptFrames.Com)

Drawn By: KX

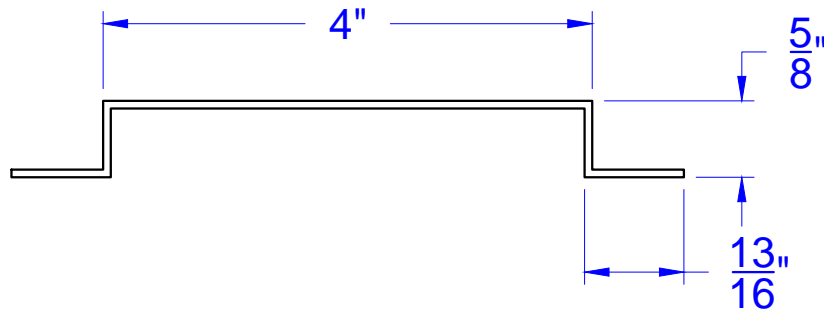
Date: 2-20-2015

Hollow Metal Door Endcap  
Bevel, Hemmed edge notch, and Weep hole.

22 gage  
1 3/4" thick door  
6 11/16" stretch out



22 gage  
1 3/8" thick door  
6 5/16" stretch out



# Concept Frames, Inc.

2015 Industrial Drive, Newton, NC 28658  
PH: 888-234-9455 Fax: 800-631-9089

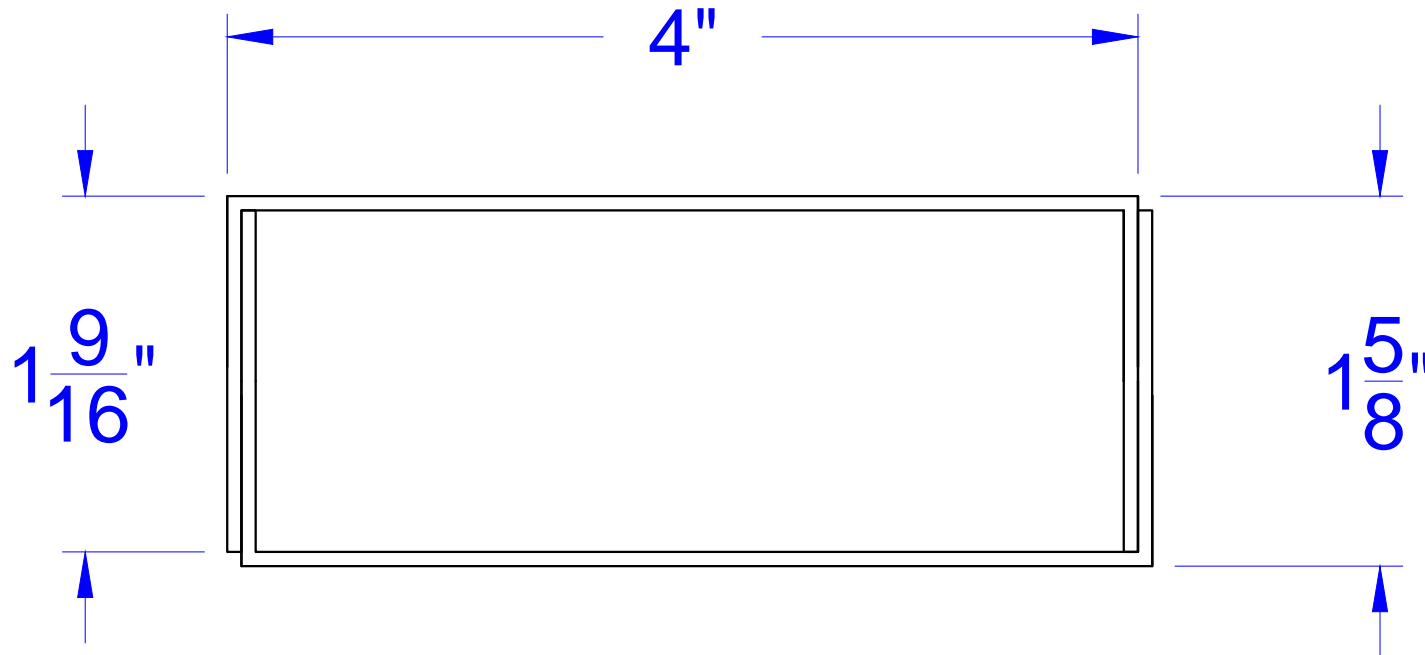
[www.ConceptFrames.Com](http://www.ConceptFrames.Com)

Drawn By: KX

Date: 2-20-2015

Hollow Metal Door  
Steel Stiffeners

16 gage material  
Splice stiffener for a 1 3/4" thick door shown



16 gage steel stiffeners will be used on oversized doors that requires a vertical or horizontal splice. Stiffeners will be centered in splice sections or used as reinforcement for wide doors.

**Concept Frames, Inc.**

2015 Industrial Drive, Newton, NC 28658  
PH: 888-234-9455 Fax: 800-631-9089

[www.ConceptFrames.Com](http://www.ConceptFrames.Com)

Drawn By: KX

Date: 2-20-2015

Hollow Metal Door  
Steel Stiffeners for Spliced Door