

- All reinforcements shall be constructed of 16 gage material per HMMA 860-92
- Reinforcements provided 5" wide or width of stile.
- Trim reinforcements not provided on outside face when "exit only" is specified.

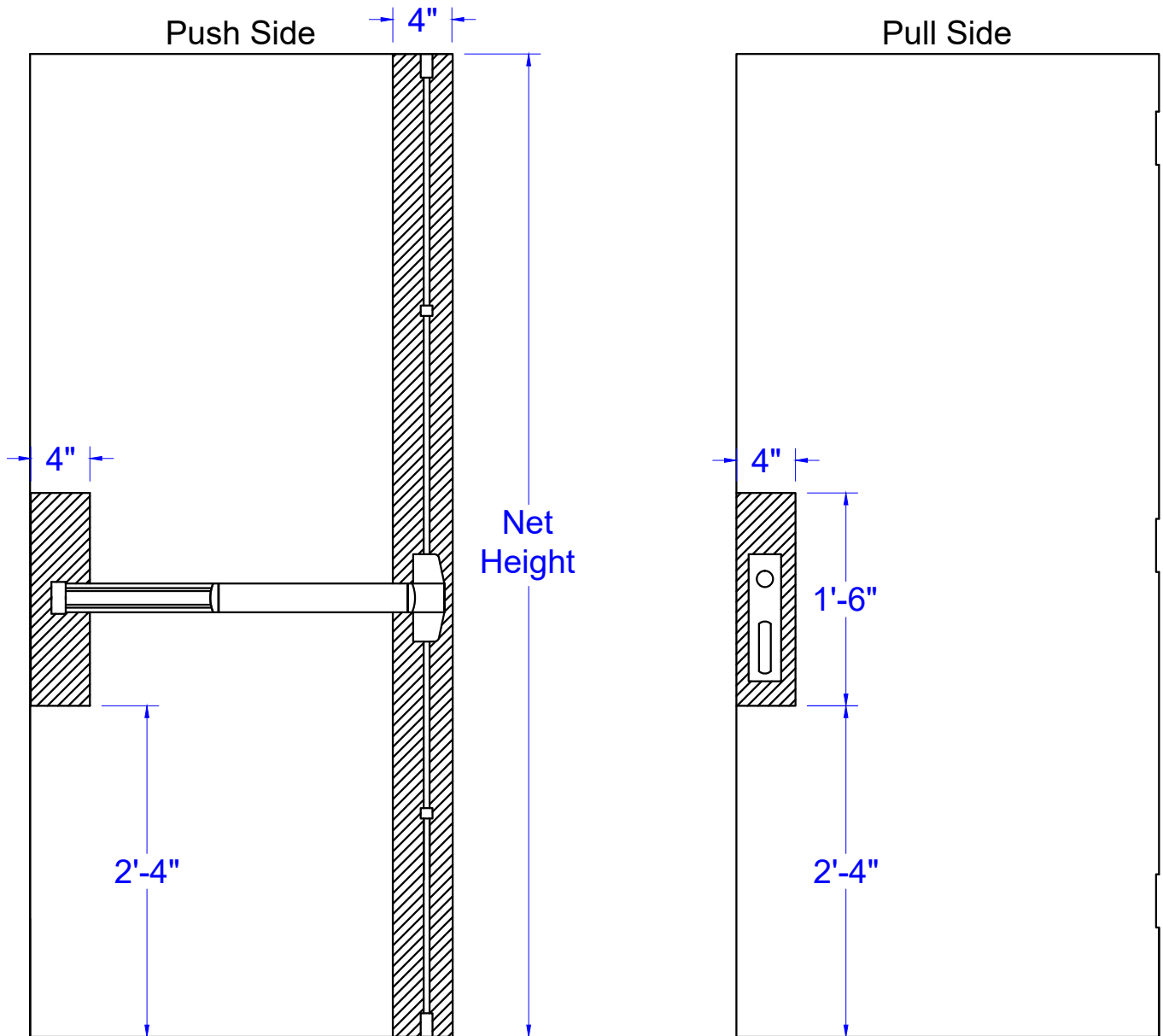
Concept Frames

2015 Industrial Drive, Newton, NC 28658
PH: 888-234-9455 Fax: 800-631-9089
www.ConceptFrames.Com

Drawn By: KX

Date: 2-18-2015

Reinforcements for Rim, Mortise,
and Concealed Vertical Rod Devices



- All reinforcements shall be constructed of 16 gage material per HMMA 860-92
- Reinforcements provided 5" wide or width of stile.
- Trim reinforcements not provided on outside face when "exit only" is specified.
- Surface vertical rod rein. provided full height of door

Concept Frames

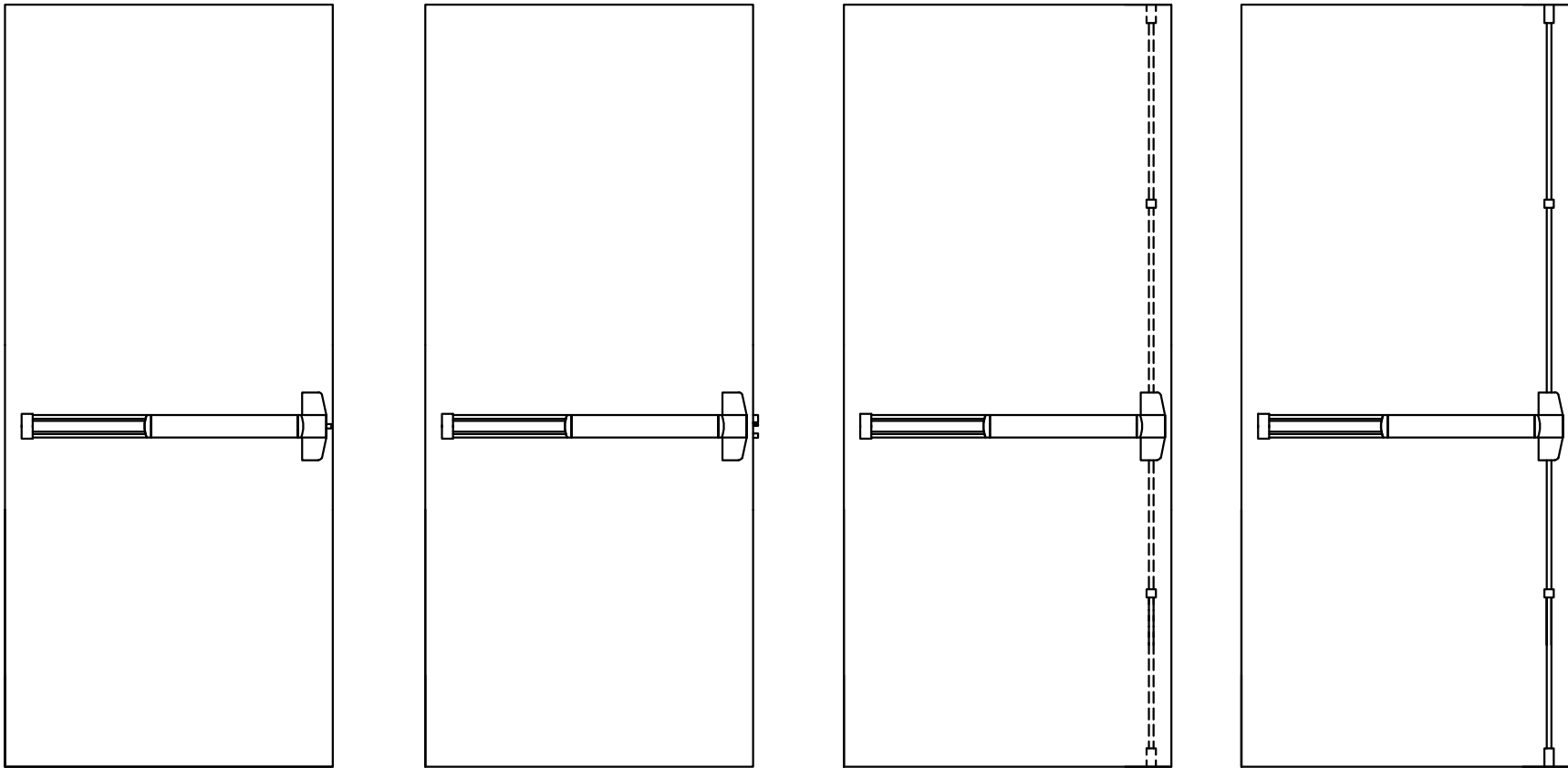
2015 Industrial Drive, Newton, NC 28658
 PH: 888-234-9455 Fax: 800-631-9089
www.ConceptFrames.Com

Drawn By: KX

Date: 2-18-2015

Reinforcements for
 Surface Vertical Rod Devices

Not to scale



All doors with Rim, Mortise, Concealed or Surface Vertical Rods require the auxiliary label shown below.



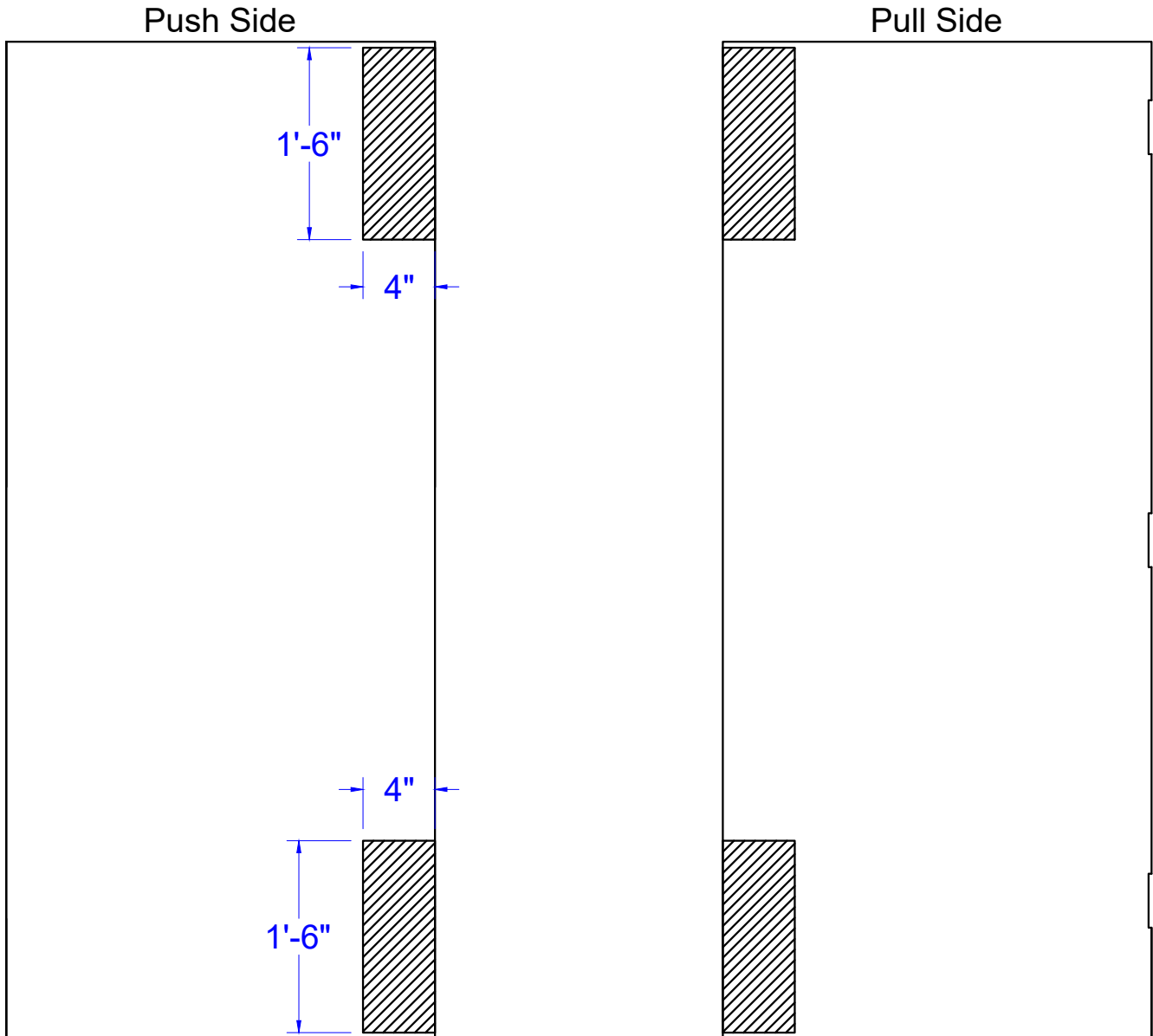
Concept Frames

2015 Industrial Drive, Newton, NC 28658
PH: 888-234-9455 Fax: 800-631-9089
www.ConceptFrames.Com

Drawn By: KX

Date: 2-19-2015

Fire Rated Door with Exit Hardware Auxiliary Label



- Closer reinforcement box will be welded to the top and bottom of door.
- Reinforcement will be butted against strike channel or door edge.
- Clearance will be allowed for top and bottom channels

* See Closer Reinforcement Technical Data Sheet for reinforcement details

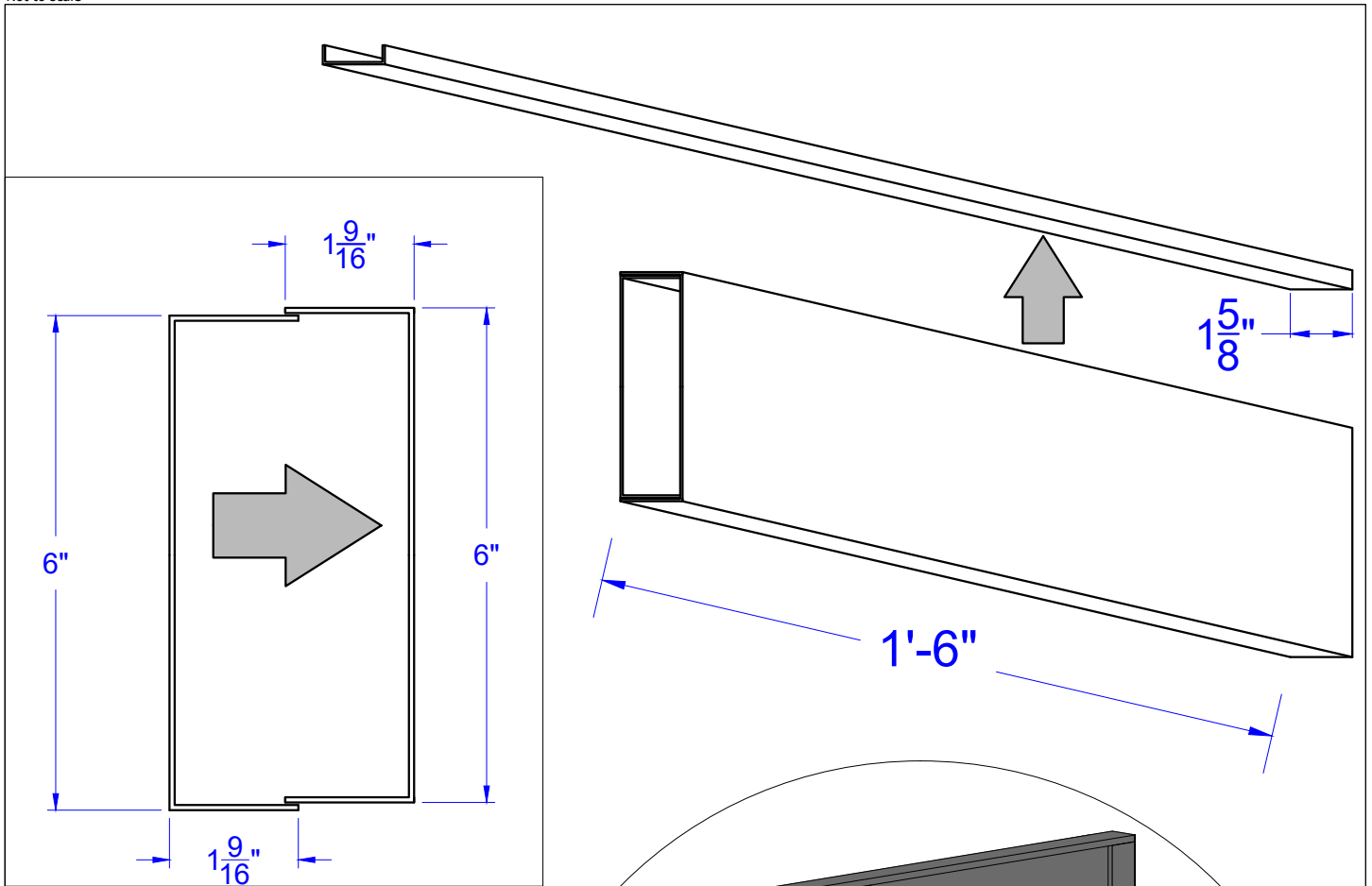
Concept Frames

2015 Industrial Drive, Newton, NC 28658
PH: 888-234-9455 Fax: 800-631-9089
www.ConceptFrames.Com

Drawn By: KX

Date: 2-19-2015

Reinforcements for Surface Bolt



Closer reinforcement is fabricated out of 16 gauge.

The closer box is welded to top cap at each end.

Top cap closer assembly is welded to each door skin.

In lieu of closer box, flat plates may be used. Each flat plate shall be of 16 gage and welded to each door skin.

Concept Frames

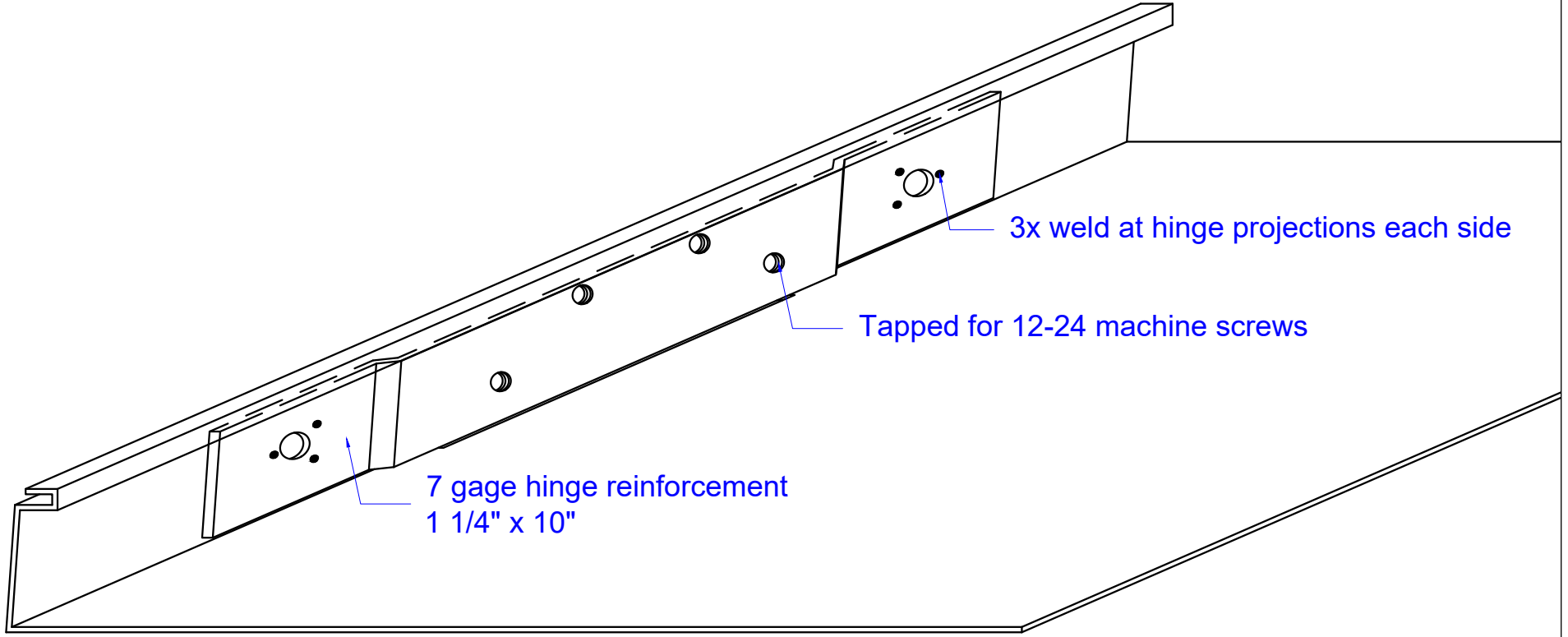
2015 Industrial Drive, Newton, NC 28658
PH: 888-234-9455 Fax: 800-631-9089
www.ConceptFrames.Com

Drawn By: KX

Date: 2-19-2015

Hollow Metal Door
Closer Reinforcement

Not to scale



1/4" standard hinge backset for 1 3/4" thick door.

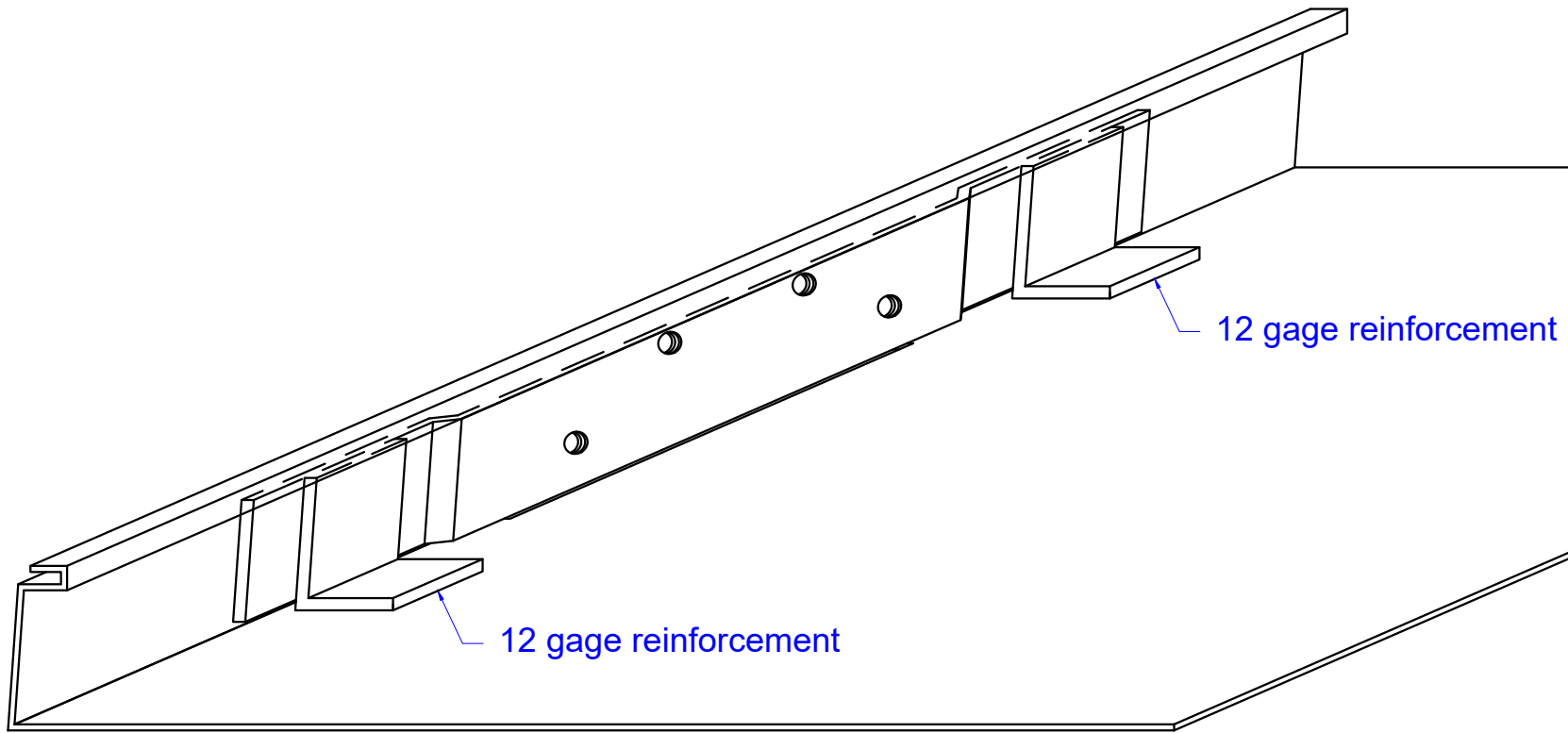
Concept Frames

2015 Industrial Drive, Newton, NC 28658
PH: 888-234-9455 Fax: 800-631-9089
www.ConceptFrames.Com

Drawn By: KX

Date: 2-19-2015

Hollow Metal Door Hinge Reinforcement Detail



High frequency hinge reinforcements are typically welded at the top hinge location, but can be used at other hinge locations

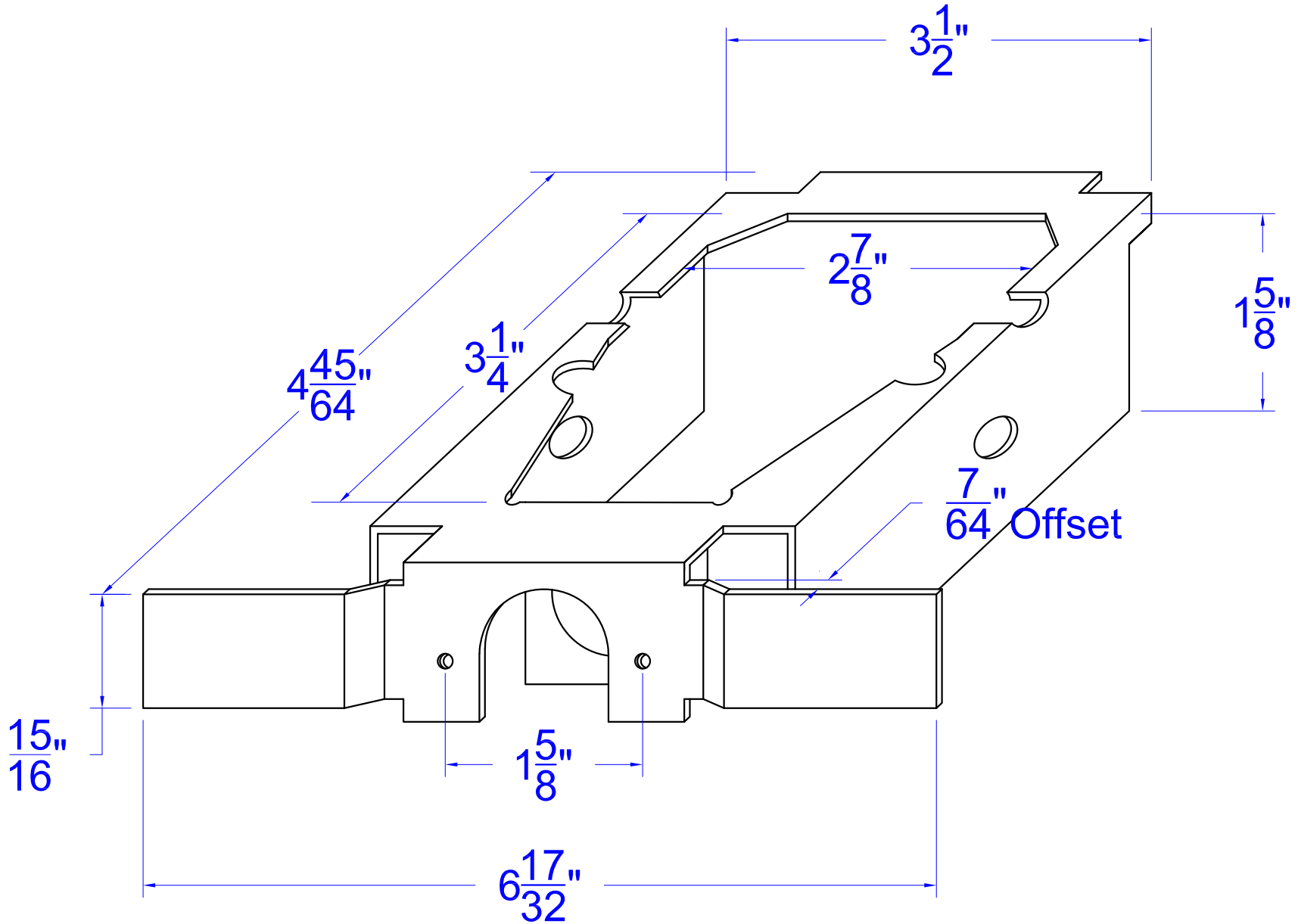
Concept Frames

2015 Industrial Drive, Newton, NC 28658
PH: 888-234-9455 Fax: 800-631-9089
www.ConceptFrames.Com

Drawn By: KX

Date: 2-19-2015

Hollow Metal Door
High Frequency Hinge Reinforcements Detail



Concept Frames

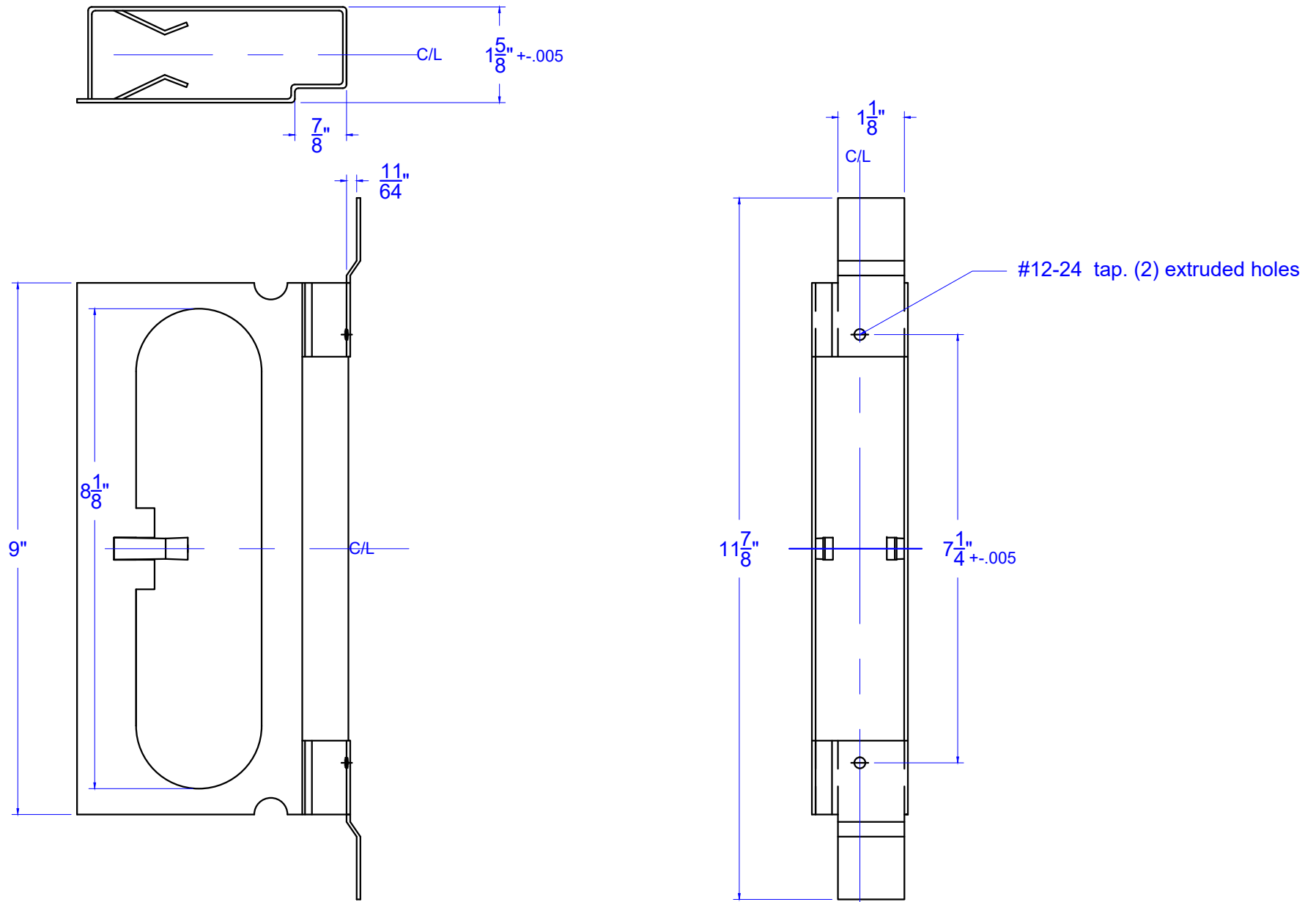
2015 Industrial Drive, Newton, NC 28658
PH: 888-234-9455 Fax: 800-631-9089
www.ConceptFrames.Com

Drawn By: KX

Date: 2-19-2015

Hollow Metal Door
16 gage Cylindrical Lock Reinforcement

Not to scale



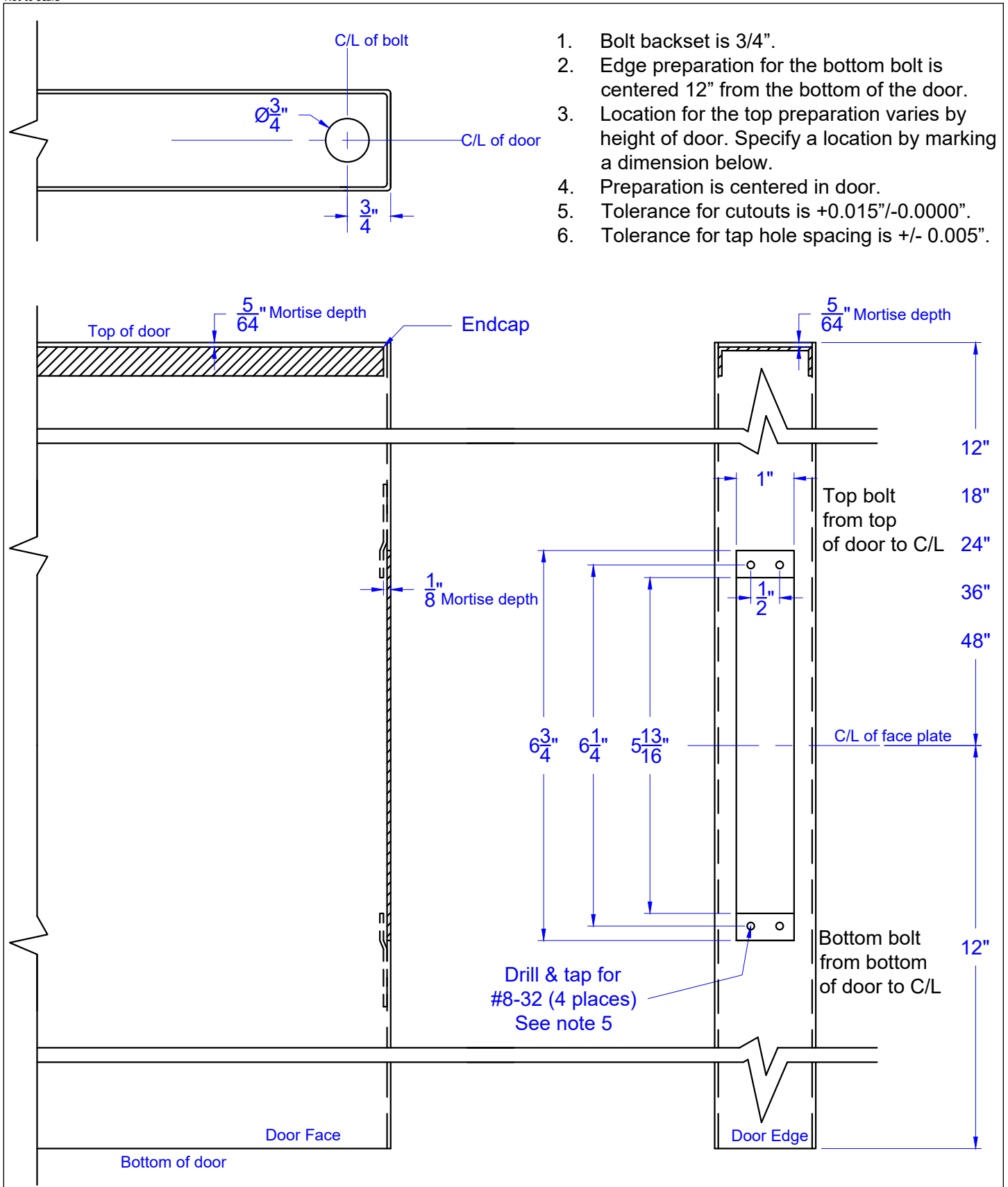
Concept Frames

2015 Industrial Drive, Newton, NC 28658
PH: 888-234-9455 Fax: 800-631-9089
www.ConceptFrames.Com

Drawn By: KX

Date: 2-19-2015

Hollow Metal Door
14 gage Mortise Lock Reinforcement



1. Bolt backset is 3/4".
2. Edge preparation for the bottom bolt is centered 12" from the bottom of the door.
3. Location for the top preparation varies by height of door. Specify a location by marking a dimension below.
4. Preparation is centered in door.
5. Tolerance for cutouts is +0.015"/-0.0000".
6. Tolerance for tap hole spacing is +/- 0.005".

Concept Frames

2015 Industrial Drive, Newton, NC 28658
 PH: 888-234-9455 Fax: 800-631-9089
www.ConceptFrames.Com

Drawn By: KX

Date: 2-19-2015

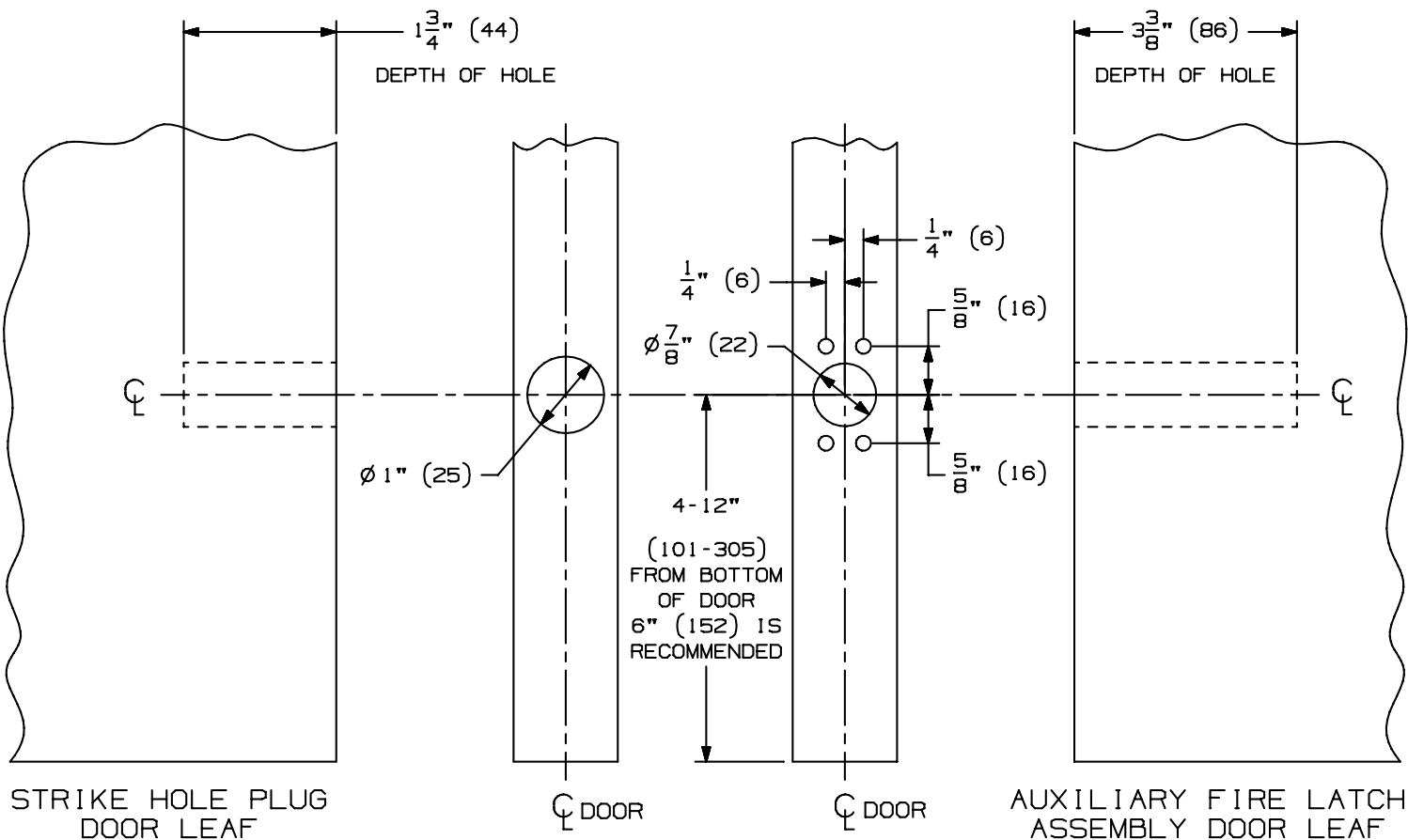
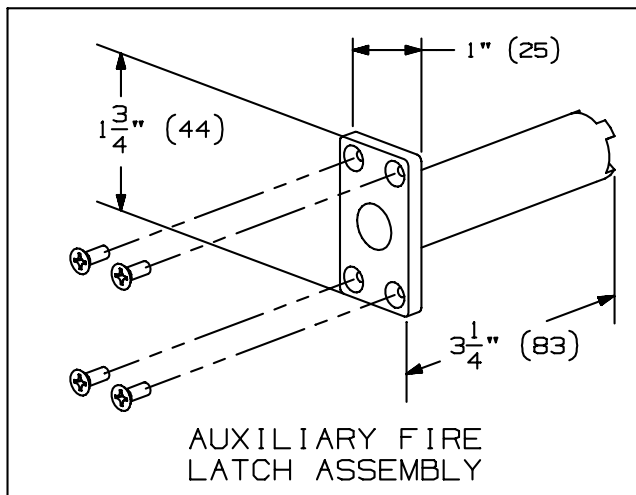
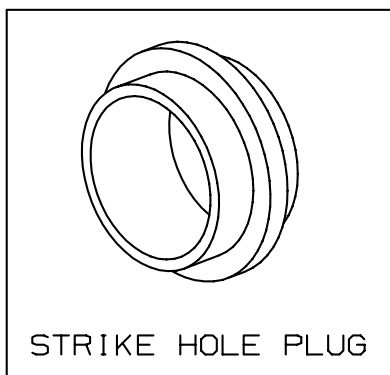
A.N.S.I. A115.4 Standard
 Manual Flush Bolt Preparation
 for 1 3/4" Steel Doors

LBB FIRE LATCH FOR USE ONLY WITH IVES
 FB32, FB33, FB42, FB52, FB53 AND FB62 FLUSH BOLTS

NOTE:

IT DOES NOT MATTER WHICH DOOR LEAF THE AUXILIARY FIRE LATCH IS INSTALLED. HOWEVER, THE LATCH MUST BE INSTALLED TO MAINTAIN FIRE LISTING. THE PURPOSE OF THE AUXILIARY FIRE LATCH ASSEMBLY IS TO KEEP THE DOORS IN ALIGNMENT DURING A FIRE. IN A FIRE, THE BOLT EXTENDS FROM THE AUXILIARY FIRE LATCH INTO THE STRIKE HOLE IN THE OPPOSITE DOOR LEAF. THE BLACK CAP VISIBLE ON THE FACE OF THE LATCH MUST MELT IN ORDER FOR THE BOLT TO EXTEND, THEREFORE:

DO NOT COVER THE DOOR GAP AT THE AUXILIARY FIRE LATCH WITH A DOOR EDGE GUARD OR SIMILAR DEVICE.



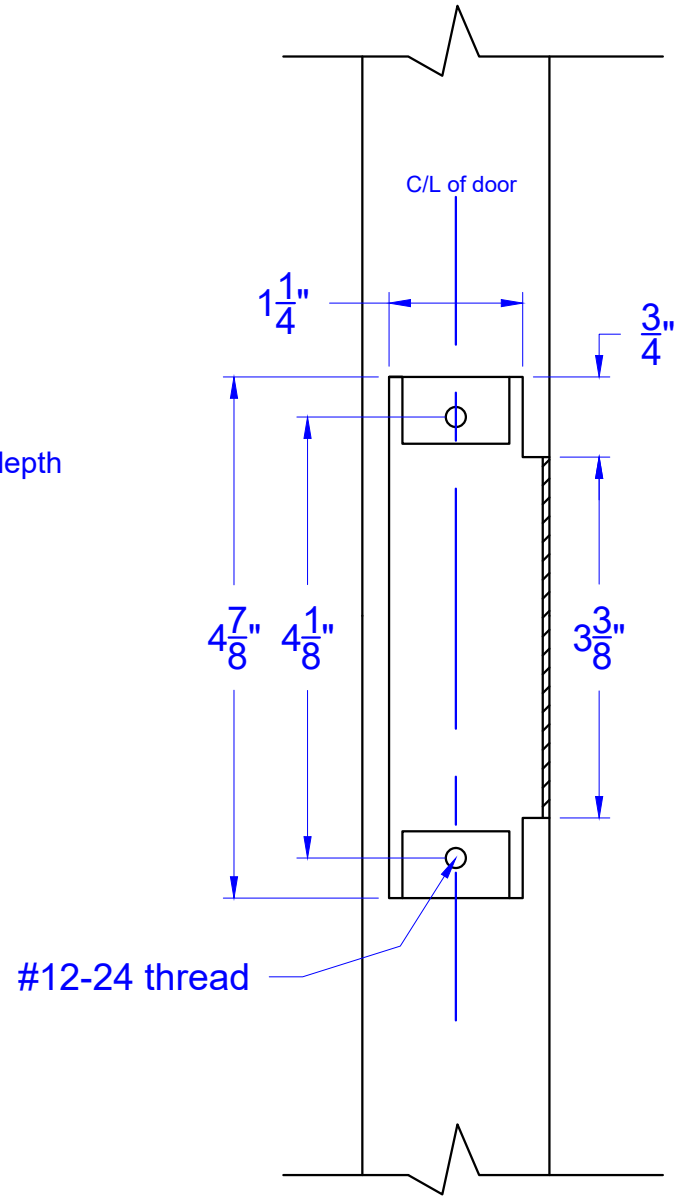
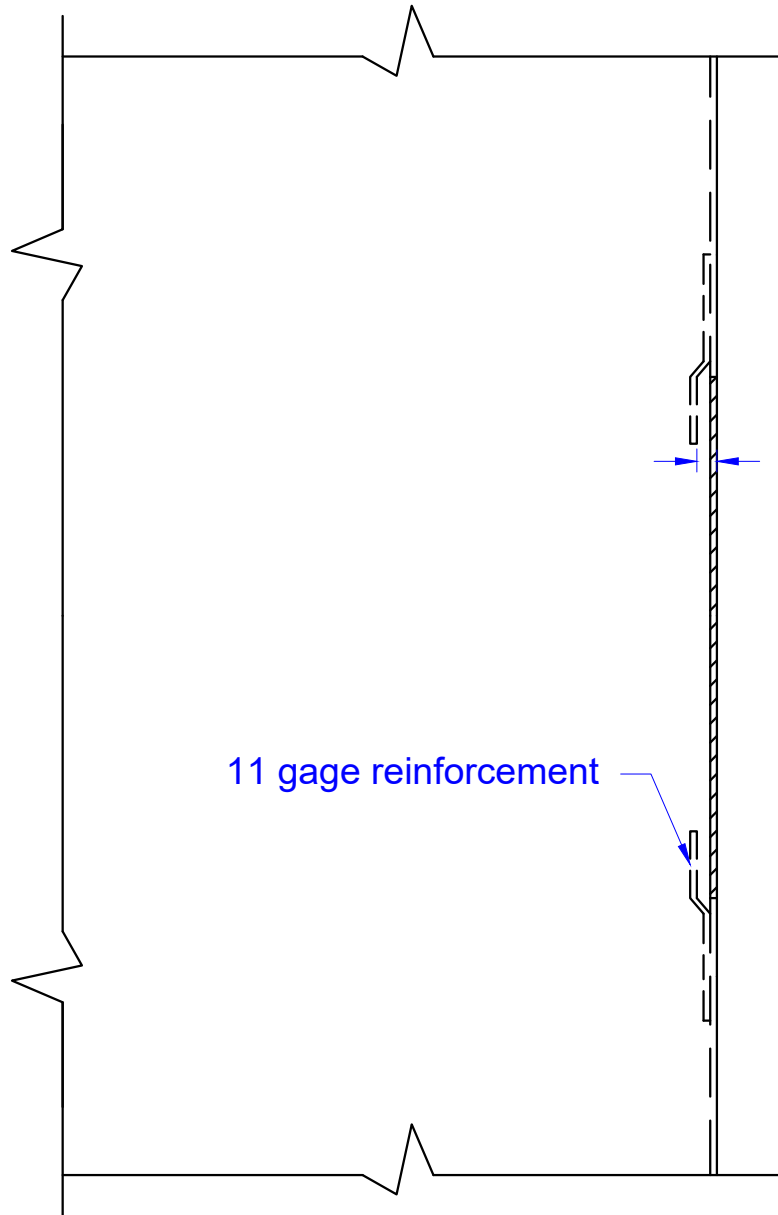
IVES FB53 CONSTANT LATCHING FLUSH BOLT
 WITH AUXILIARY FIRE LATCH
 FOR METAL DOORS
 INSTALLATION TEMPLATE



NOTE: DIMENSIONS IN () ARE MILLIMETERS.

TEMPLATE NUMBER: INST.FB53_0.PG3

DATE: 09-01-01



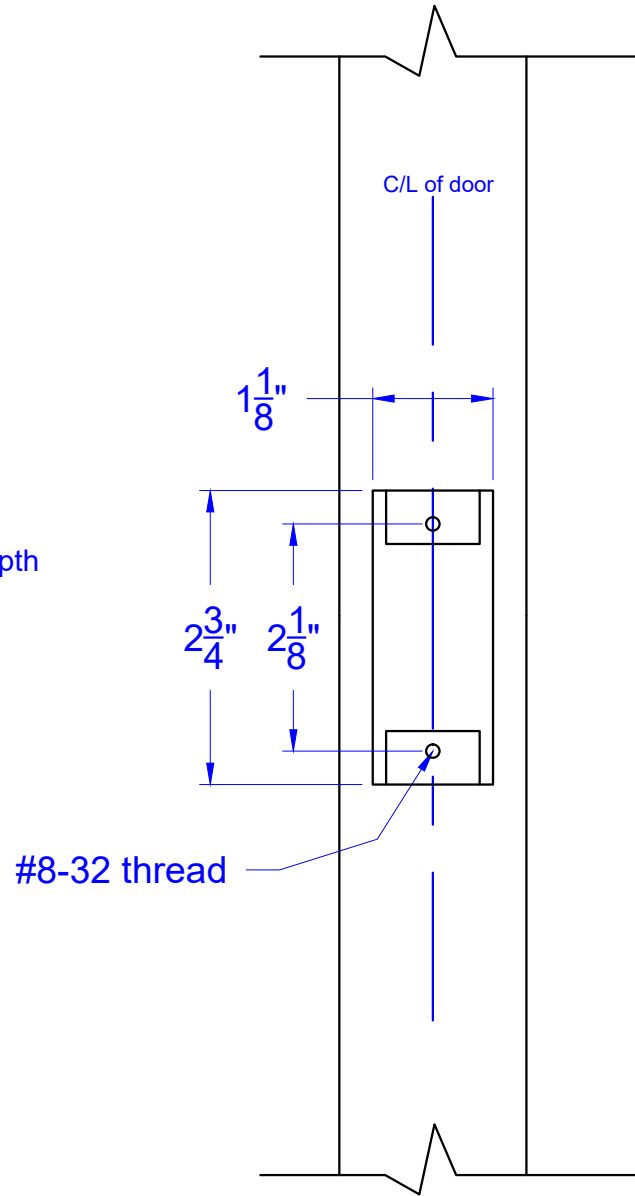
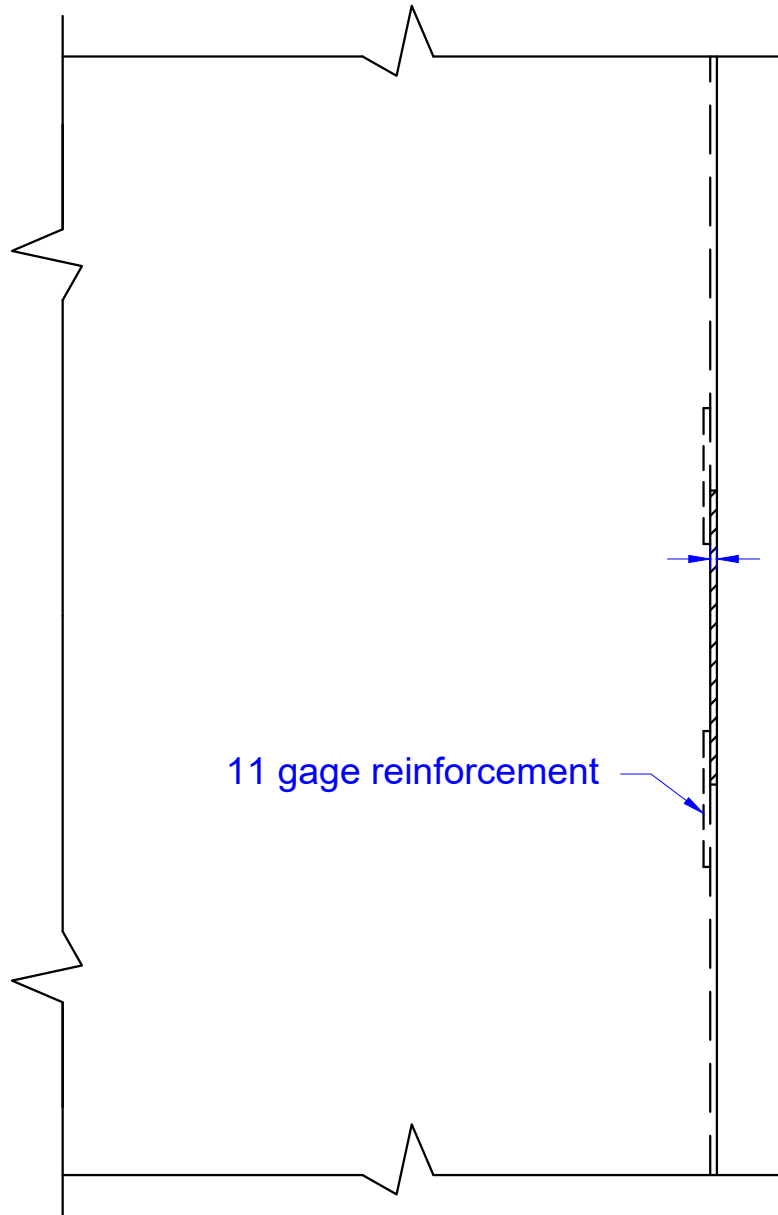
Concept Frames

2015 Industrial Drive, Newton, NC 28658
PH: 888-234-9455 Fax: 800-631-9089
www.ConceptFrames.Com

Drawn By: KX

Date: 2-20-2015

Hollow Metal Door
ASA Strike Preparation



Concept Frames

2015 Industrial Drive, Newton, NC 28658
PH: 888-234-9455 Fax: 800-631-9089
www.ConceptFrames.Com

Drawn By: KX

Date: 2-20-2015

Hollow Metal Door
Deadlock Strike Preparation